

Change the Story



Chris and Megan -
Phillies First Pitch & Other Tales of Triumph

Chris and Megan

Phillies First Pitch

“Together we can begin the transformation process in the lives of the children who depend upon and richly deserve our help.”

Dear Friends,

There is nothing more tragic than the suffering of a child. Each year, approximately 120,000 Pennsylvania children receive child-welfare services. More than 3,000 children are victims of child abuse, and many more experience domestic or sexual violence that fall outside the official definition of child abuse. Over the last eight years, more than 350 Pennsylvania children died as a result of child abuse.

The Support Center for Child Advocates (*Child Advocates*) provides legal and social services to children in Philadelphia who have been abused and neglected and are facing the uncertainty of the child welfare system. Appointed to represent children in some of the most complex cases in Philadelphia’s dependency and criminal courts – sibling groups, kids in kinship care, medically-needy boys and girls, and young victims of sexual abuse – our caseload is ever increasing. We served 838 children during our Fiscal Year 2010 and 873 during Fiscal Year 2011.

Every one of the children has a story. When they come to us, it is one of trauma and pain, but through the dedication of our volunteer attorneys, and with the guidance of *Child Advocates* social workers and lawyers, these stories become tales of triumph.

Although these numbers and needs are disheartening, we are fortunate that so many people in the community come together to make a difference in each child’s life. We are indebted to many for advice, support and advocacy, with whose help we can meet the needs of these kids and bring them a better chance for a happily ever after. Together, we can change the story.

With the commitment of our talented staff and the perseverance of our loyal volunteers, together with the true benevolence of our individual, corporate and foundation donors, *Child Advocates* contributes to our community. Most importantly, together we can begin the transformation process in the lives of the children who depend upon and richly deserve our help.

The following report covers the time period of July 1, 2009 through June 30, 2011 (FY10 and FY11). With a side-by-side comparison, you can see our growth over this time period. We continue to increase our staff, provide more trainings, develop new initiatives and programs, and ultimately serve more children. We are able to achieve so much only with the support of hundreds of people throughout the community. We welcome you to get involved — join us in our work with children who have been abused and neglected and help us give them a chance for a safe and secure future.

KATAYUN I. JAFFARI
President

LEONARD A. BERNSTEIN
Past President, 2007-2011

FRANK P. CERVONE
Executive Director

Board of Directors

Jo Rosenberger Altman

Montgomery, McCracken,
Walker & Rhoades LLP

Kimberlee Washington Barr

PricewaterhouseCoopers

Jeffrey Barrack

Barrack, Rodos & Bacine

Leonard Bernstein

Reed Smith LLP

Andrea Broad

Jill Felix Colton*

Victoria Demo*
Citizens Bank of PA

Joe DeSimone*

Marcum LLP

Gary Deutsch*

PNC Bank, NA

Christopher Dunne

Cooper, Morrison & Dunne

Kathleen Egan*

Radian Guaranty

Debra Fickler*

Villanova University

Ronald Fisher

MillCrest Law LLP

A. Nicole Friant*

Duane Morris LLP

Amy Fox*

RAF Industries, Inc.

Mark Gittelman*

PNC Bank, NA

Gail Greenspon

Albert Einstein Healthcare Network

Beth Hanssens*

Sprout

Rosemarie Hoslyn*

De Lage Landen Financial Services

Katayun Jaffari*

Saul Ewing LLP

Katherine Kelton*

ARAMARK

Karen Lessin

Independence Blue Cross

Sherri Krensel*

Workplace Environments 2000

Bruce Lev*

LevLane

Raymond McCullough

Pennsylvania Convention Center

Janie Mershon*

Attorney at Law

Edward Ohlbaum*

Beasley School of Law, Temple
University

Kathy Ochroch*

Blank Rome LLP

Charles Persing*

Benderson & Company LLP

Jill Porter*

Shannon Prown*
Navigant Consulting

Elizabeth Reeves*

Global Human Resources

Jane Robinson*

UBS Financial Services

Suzanne Root*

Attorney at Law

Matthew Siegel*

Cozen O'Connor

David Silverman*

Curley, Hessinger & Johnsrud

Stuart Sklar

CDI Corporation

William Stassen

Fox Rothschild LLP

Mark Stewart

Ballard Spahr Andrews & Ingersoll LLP

Anthony Stover

Promo Marketing

Audrey Talley

Drinker, Biddle & Reath LLP

Thomas Tammany

Buchanan, Ingersoll & Rooney, PC

Joe Tucker*

Tucker Law Group LLC

Ilene Wasserman*

ICW Consulting Group

*Current Members

Staff

Laurie Ayler*

Frank Cervone*

Xia Chen*

A.B. Clarke*

Pascalina Delmas*

Kristyn DiDominick

Alexandra Dolan*

Muhammida El Muhajir*

Pamela Ende*

Devon Ferguson*

Marguerite Gualtieri*

Mary Ann Hearn

Beth Herdmann*

Shafiquah Hudson*

Barry Kassel*

M. Christine Kenty*

Paul Kupferschmidt

Sandra Lavini*

Marti Little*

Rebecca Mainor

Patricia Marino-Bongiovanni

William McHale

R. Allison Modica

Gina Morrison*

Moira Mulroney*

Chandra Palmer*

Milagros Roca*

Jodi Schatz*

Sonja Smith*

Noreena Sondhi*

Naketa Thigpen

Tracey Thomasey*

Liz Wagner*

*Current Members

Leadership Council

Chair

Honorable Jane Cutler Greenspan (Ret.)

JAMS Arbitration, Mediation and ADR Services

Members

Honorable Lynne M. Abraham

Archer & Greiner

Dr. Steven M. Altschuler

The Children's Hospital of Philadelphia

Leonard A. Bernstein

Reed Smith LLP

Sheldon M. Bonovitz, Esq.

Duane Morris LLP

Christopher E. Dunne, Esq.

Cooper Morrison & Dunne

Kenneth C. Frazier, Esq.

Merck & Co., Inc.

Nancy H. Fullam, Esq.

The Fullam Firm, P.C.

Dr. Richard J. Gelles, Ph.D.

University of Pennsylvania School
of Social Policy and Practice

Lynne Honickman

The Honickman Foundation

Ron Jaworski

ESPN

Leonard M. Klehr, Esq.

Lubert-Adler Partners, LP

Susanna E. Lachs, Esq.

Leslie Anne Miller, Esq.

Leslie Anne Miller, LLC

Jim Murray

Jim Murray Ltd.

James Redeker, Esq.

Duane Morris LLP

Honorable Michael R. Stiles

Philadelphia Phillies

Megan cheers like mad as her brother Chris throws out an incredible first pitch. He turns to face her and his smile beams through the sheets of rain like sunlight through clouds. As amazing as it is to be a guest of the Phillies at Citizens Bank Park, it's even more remarkable that these two children should find themselves where they are today. But with the help of our family of friends and supporters, *Child Advocates* was able to change their story.

About the Support Center for Child Advocates

Every day we see the devastating evidence of children suffering. The need is as great as ever for support, advocacy and protection of youth who are too often forgotten by the system. However, we also see that the tireless efforts and unending generosity of our staff and supporters throughout the region can truly change the story for the children we serve. We witness countless examples of a child's ability to triumph over adversity.

Support Center for Child Advocates, founded in 1977, is the country's oldest and largest pro bono legal and social services agency for children. Our mission is to advocate for abused and neglected children in Philadelphia with the goal of securing a permanent, nurturing environment for every child.

At *Child Advocates*, we team specially trained volunteer lawyers with experienced child advocate social workers and staff attorney consultants to provide legal and social services to child victims of abuse and neglect through a "whole child" representation model. As the children's lawyers, we stand with them to protect

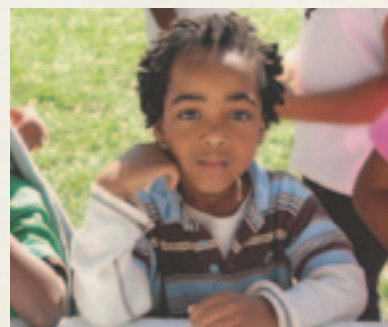
their rights in any legal proceeding. As their advocates, we ensure that their medical, educational, behavioral health and all other basic needs are met.

Our dedicated Board of Directors provide diligent fiscal and programmatic oversight and serve as our ambassadors in the community. Hundreds of generous donors and lay volunteers help to promote our work through special events like the *Child Advocates* Golf Classic, Holiday Toy Drive and the Philadelphia Bar Association 5K Run/Walk.

Since we began our work, *Child Advocates* has trained more than 4,000 attorneys who contribute pro bono services valued at more than \$4.6 million annually.

Starting the game with strikes against them.

When *Child Advocates* meets Chris and Megan, the children have been bouncing from house to house for several years, staying with relatives and in a succession of foster care homes. Their father is in and out of prison. Their mother is incapable of caring for them. For the past three years, they have been in the care of the Philadelphia Department of Human Services.



Child Advocates Accomplishments in Fiscal Years 2010 - 2011

The number of children served by *Child Advocates* has risen significantly over the last two years. As compared to prior years we have seen a dramatic increase primarily due to the recognition of the quality of our work (resulting in more court appointments and requests for services) as well as our increased staff size which allows us to respond to the needs of more children. Which comes first – the need for services or our capacity to respond? We see no signs of slowing down, but we are fortunate to be able to rely on the support and generosity of so many people. Together, we can change the story.



Clients, Volunteers and Outcomes

Each year, hundreds of dedicated volunteer lawyers join our staff social workers to represent children who have been abused and neglected and require legal representation in the Philadelphia court systems.

- In Fiscal Year 2010 we represented 838 children. That number grew to 873 in FY11, an all-time high in the more than 34 years of agency service. Each year approximately 330 volunteer attorneys donate more than 31,000 hours providing the equivalent of \$4.6 million in legal services.
- The majority of our children are served through the Child Protection Program, using our “whole child” model where we team volunteer lawyers with masters level social workers to address the legal and social service needs of the client. This work was supported by grants from the Independence Foundation, Horace Goldsmith Foundation, the Patricia Kind Foundation and the PA Commission on Crime and Delinquency, among others.
- It is our goal to secure a permanent and nurturing environment for each of our child clients by the time the case is closed. As compared to 85-90% during the previous years, 92% of our clients with closed cases in 2009 (the last year of our published outcomes) experienced positive permanency outcomes. We define positive permanent outcomes as living in supportive homes or with adequate supports as independent adults. Kids in our **Project for Medically Needy Children** – whose medical needs created their dependent status – had just as high a rate of achieving permanent homes as our overall client population.
- Sponsored by a major grant from The Pew Charitable Trusts and with match support from North Penn and Greentree Community Health Foundations, First Hospital Foundation, the Hess Foundation and dozens of individual contributors, *Child Advocates* created the **Outcomes in Behavioral Health Project** to help the agency dramatically improve behavioral health

Turning the game around.

Supported by their *Child Advocates* team, Staff Attorney Marti Little and Volunteer Attorney Patricia Eynard of Pepper Hamilton, Megan and Chris make the painful decision to ask the Court for a termination of parental rights, which is granted. Now, we can address the challenging task of finding them a safe, nurturing and permanent home.

Child Advocates Accomplishments (cont.)



outcomes of children who have suffered the trauma associated with abuse. Started in 2007 with a three-year grant from Pew, and renewed for another three years in 2010, this initiative has helped *Child Advocates* to substantially increase the proportion of our clients who received professional assessment and treatment. Now, more than 75% of preschool-aged clients who need early childhood behavioral health assessments get them – compared to 50% in previous years. Always seeking to improve services and outcomes in behavioral health, we convened a working group in 2009 to address delays and barriers to obtaining treatment services for children in the custody and care of the Philadelphia Department of Human Services, and in 2011 we began to provide trainings to the direct service providers and caregivers to reduce the stress associated with working with traumatized children.

Leadership

Long considered experts in the area of legal representation of children and the child welfare system, *Child Advocates* is often asked to participate in leadership efforts, helping to set standards and advising on best practices.

- In 2010, several staff participated in leadership efforts at Family Court of Philadelphia's **Court Improvement Project and Children's Roundtable**, focusing on adoption reform, strengthening legal representation, and the implementation of 90-day review hearings. We helped review cases and develop a new protocol for handling petitions that seek to modify Permanent Legal Custody Orders.
- Generously hosted by Duane Morris LLP, *Child Advocates* continued in 2010 to convene the **Law Enforcement Child Abuse Project**, a monthly colloquium of public officials and private practitioners involved in the early stages of child-abuse cases. Topics include a review of laws and agency

compliance on child fatality and near-fatality cases; forensic interviews of victims of child sexual abuse; quality assurance at the Philadelphia Department of Human Services (DHS) and the safety model of practice; outreach to fathers by child welfare professionals; new programs for older youth; and experiential education and community-based programs for parents.

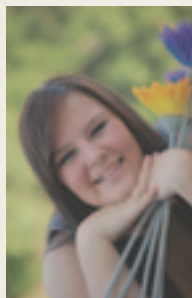
- Director of Social Work **Tracey Thomasey** served on the **Advisory Committee on the Rights and Needs of Children of Incarcerated Parents**, under the Joint State Government Commission, the research arm of the PA General Assembly.
- Executive Director **Frank Cervone** and Managing Attorney **Marguerite Gualtieri** served on the **Working Group of the Children's Rights Litigation Committee** of the American Bar Association's Section of Litigation. *Child Advocates* remains heavily involved in a national dialogue on the right to counsel for children and model legislation to define the role of lawyers for children in abuse and neglect cases.
- In 2011, five staff members participated in **Quality Service Reviews** at DHS. Over 200 staff hours were spent in this interdisciplinary systems review, utilizing both internal and external stakeholders, conducted by DHS to evaluate various aspects of the child welfare system and determine how the system can better serve families. Our staff participated in trainings, and working in teams, they spent three days interviewing all available participants in a randomly-selected child's DHS case. They then analyzed the case and presented the strengths and weaknesses of the system's responses to the DHS Commissioner. The Commissioner tasked her internal team with the implementation of all the suggested systemic changes from each review. *Child Advocates* plans to continue to participate in this process to ensure best practices are followed throughout the child welfare system.

Staying loyal until the final inning.

Today, *Child Advocates* is working with a relative of Chris and Megan to arrange for their adoption. But the very best news is, these children are no longer on their own. They now have a loyal team of friends and supporters cheering them on – and more importantly, putting time, expertise and resources behind their intentions. In fact, it is the boundless devotion of our family of friends that lands Chris on the pitcher's mound at the Phillies vs. Cleveland Indians game...

*Child Advocates Accomplishments (cont.)***Training**

- In order to volunteer with *Child Advocates* an attorney must participate in special training. Under the auspices of the Pennsylvania Bar Institute, *Child Advocates* staff conducts semi-annual full-day Volunteer Training Workshops, educating attorneys on “How to Handle a Child Abuse Case,” and accompanies our new Volunteer Attorneys on Courtroom Observation sessions.
- Director of Intake and Pro Bono Services **Jodi Schatz** produced trainings at Family Court for all dependency practitioners on: multi-generational impact of childhood trauma and adversity; and Common Pleas Case Management System (CPCMS) and dependency practice. With support from The Abington Foundation, Ms. Schatz and staff continued support for 16 child advocacy practice groups in area law firms and corporations. Agency staff trained the practice groups on “How To Do a Home Visit.”
- Independence Foundation Fellow **Rebecca Mainor** presented on representing lesbian, gay, bisexual, transgendered and questioning (LGBTQ) youth at the 2010 **Statewide Adoption Network Annual Permanency Conference**, and Managing Attorney **Marguerite Gualtieri** presented on important appellate cases in child welfare and custody. Outcomes in Behavioral Health Project Directors **R. Allison Modica**, **Naketa Thigpen** and Staff Attorney **Noreena Sondhi** presented specialized PA Bar Institute trainings on handling dependency case involving a child with complex behavioral or medical needs; the Project is sponsored by a major grant from The Pew Charitable Trusts. Ms. Sondhi and Volunteer Fellow **Pam Ende** continued our collaborative trainings and courtroom observations for pediatric residents from The Children’s Hospital of Philadelphia.
- Our work with older youth expanded, as Staff Attorney **Marti Little** presented on “Educational Alternatives for Older Youth” at Family Court. Ms. Little also presented 4 half-day sessions to DHS social workers and providers on the new federal “Fostering Connections” legislation.



- Executive Director **Frank Cervone** continued his service as Chair of the **Pennsylvania Children’s Trust Fund**, which provides funding and leadership for child abuse prevention efforts across the Commonwealth, and member of the **Pennsylvania Supreme Court Juvenile Court Procedural Rules Committee**, drafting new rules for consideration by the Court.
- **Frank Cervone** also developed and presented a training program for Presbyterian ministers on child abuse reporting duties. Topics included Pennsylvania’s mandatory child abuse reporting laws; how to report, when and to whom; and recommended safety practices. The session was such a success that Mr. Cervone has been invited to return.
- Expanding our trainings to include new topics and broader audiences, *Child Advocates* trained more than 500 attorneys, social workers and other child welfare professionals in FY11. Sessions included: “Mastering the Art of Advocacy;” “Back to School, Part 1” and “Back to School, Part 2;” “Dependency Law Update;” and our cornerstone training, which was offered three times – the standard two sessions in conjunction with the Philadelphia Bar Institute, and an additional session held at Morgan Lewis & Bockius LLP as part of our partnership with the firm and CIGNA.
- “Changing the Story: Measuring Success,” a funders breakfast was hosted by Blank Rome on May 25, 2011. The Research & Evaluation Committee, led by Board Member **Kathy Ochroch**, Partner and the Director of Pro Bono Services at Blank Rome, presented the FY09 Client Outcomes Report by **M. Christine Kenty, Ph.D.** to more than 30 major donors, foundation representatives and other interested stakeholders. **Frank Cervone** and Social Services Worker **Chandra Palmer** also presented.

Capacity Building

- Agency staff completed selection of a relational database and design of a complex set of informational fields for our new Case Management Software

Setting the whole team up for success.

Thanks to the generosity of one of our loyal fans, *Child Advocates* is in the fortunate position of being able to auction off the first pitch at a Phillies game during our Annual Benefit Reception and Auction. Two families of loyal supporters, the Bongiovannis and the Caddicks, team up and bid jointly, with the specific goal of offering this once-in-a-lifetime experience to one of our child clients.

Child Advocates Accomplishments (cont.)



Solution. Supported by a generous donation of services by computer professionals from Max-Q Technologies, the system is designed to facilitate a comprehensive, robust approach to case management, calendaring, supervision and outcomes measurement. With capacity-building support from The Pew Charitable Trusts, the McLean Contributionship, and NPower PA, we fully upgraded our server infrastructure while leveraging \$45,000 in grant support to achieve improvements valued in excess of \$200,000.

- Several new staff members joined the agency in FY2011. In addition to hiring to fill positions vacated, we added two new full-time and one part-time social worker positions. **Milagros Roca** is Spanish-speaking and has been assigned to the **LGBTQ Youth Program**, serving our LGBTQ youth, paying particular attention to their special needs and circumstances. **Alexandra Dolan**, **Pascalina Delmas**, **Beth Herdmann**, **Gina Morrison** and **Naketa Thigpen** also joined our staff, bringing the social work team to its largest number to date with twelve staff members.
- The Development Team has seen a complete turnover in staffing. Under the supervision of Director of Development & Communications **Moira Mulrone**, **Sandra Lavini** focuses on foundations and other institutional funders; **Muhammida El Muhajir** handles corporate relations and special events, as well as public relations and marketing. **Shafiqah Hudson** oversees the database management.
- **Liz Wagner** was hired as Executive Assistant. She will lead the agency's efforts to increase our presence on social media and networking platforms. You can meet Liz when at our offices, as she is also our front desk receptionist.

Partnerships

- *Child Advocates* has forged a beneficial partnership with Big Brothers Big Sisters (BBBS) to provide mentors for our clients, when appropriate. We worked with BBBS to identify 154 children who were in the correct age range for a

mentor. Of these, 85 children were appropriate for a referral to BBBS. BBBS is doing outreach to their families and has engaged with over 30 caregivers directly. As of June 2011, 8 children completed the entire interviewing process. On a home visit shortly after she was matched with a mentor, one of our clients could not stop talking about how much fun she has had with her Big Sister, who is a scientist. It was apparent already that this girl had been deeply affected and inspired by her new mentor!

- *Child Advocates* has created a new partnership with Morgan Lewis Bockius LLP and CIGNA. Corporate attorneys from CIGNA General Counsel's office will partner with Morgan Lewis litigators to represent our child clients. Jodi Schatz and others presented a training for these attorneys at the offices of Morgan Lewis on February 3, 2011.

Fundraising

- Through the **LGBTQ Youth Project**, we seek to remedy the disenfranchisement of LGBTQ youth population in the child welfare system. The Project received significant funding from Women's Way, the Leo Model Foundation, Inc., Hoxie Harrison Smith Foundation and individual donors.
- The annual fundraising appeal is mailed each year in our holiday card, with artwork designed by young students at our neighboring school, the Russell Byers Charter School. In 2009, we mailed cards to more than 14,000 households, and in 2010 we reached more than 15,000 friends and supporters. This annual fundraising appeal helps to raise more than \$70,000 a year!
- We proudly report 100% Board giving for FY10 and FY11. During our fundraising efforts surrounding the Annual Benefit Reception & Auction, Board President **Len Bernstein** offered a \$10,000 challenge for each Board member to financially support the event. The Board committed \$34,125 in 2010, and \$38,950 in 2011!

The real winners are the children.

The bidding war escalates. It gets tough out there in the field, but the bidding team never falters – and they bring home the prize. This isn't the first time *Child Advocates* fans have gone to tremendous lengths to improve the quality of life for our child clients. Children like Megan and Chris have benefited in innumerable ways from the kindness of our passionate friends, supporters and volunteers. But there's no denying, this one's outta the park.

Event Highlights

Annual Benefit Reception & Auction

The **Annual Benefit Reception and Auction** continues to grow each year and has become a highlight of the public interest law spring event season. The evening celebrates kids' lives transformed through the exceptional work of leaders committed to child advocacy. It is important for our community and our agency to acknowledge significant personal commitments to the needs of abused and neglected children. We recognize this leadership through the *Judge Lois G. Forer Child Advocacy Award*.

Our Forer Award honorees – from then-First Lady Hillary Rodham Clinton to philanthropist Lynne Honickman to Ronald McDonald House co-founder Jim Murray – all share Judge Forer's extraordinary spirit and tireless advocacy for children in crisis.

On April 14, 2010, we honored then-Governor **Edward Rendell** with the Forer Award and on April 13, 2011 the award was presented to University of Pennsylvania President **Amy Gutmann**.

We also recognized several of our closest friends and allies with the *Child Advocates Distinguished Advocates Award*. The following people were honored:

2010 Distinguished Advocates:

Robert L. Ebby, Hangley Aronchick Segal Pudlin & Schiller

Leslie M. Gomez, Philadelphia District Attorney's Office

Sherri Krensel, Workplace Environments

Lisa Lewis, Blank Rome LLP

Nicole M. Reimann, Schnader Harrison Segal & Lewis LLP

Shelly D. Yanoff, Public Citizens for Children and Youth

Thomas C. Zipfel, Worth & Company, Inc.



Frank Cervone, Donna Cooper, Jim McEldrew and Nancy Fullam.



University of Pennsylvania President Dr. Amy Gutmann.

2011 Distinguished Advocates:

Anne Aaronson, Dilworth Paxson LLP

Christopher E. Dunne, Cooper Morrison & Dunne

Richard Gelles, Ph.D., School of Social Policy & Practice, University of Pennsylvania

Ira Harkavy, Ph.D., The Netter Center for Community Partnerships, University of Pennsylvania

Dolores Miller, Author & Poet

James Steigerwald, Duane Morris LLP

Leslie Sudock, Solo Practitioner

Marge & Mike Thackery, Caregivers

More than 900 guests attended each year, bidding on hundreds of silent auction items and participating in an exciting live auction of an Italian villa, a Namibian game reserve and a Scottish castle, the first pitch at a Phillies game, and dinner cooked by our own Frank Cervone, among others. Thank you to all who joined us in support of our kids!

With the tireless work of our Event Co-Chairs and our industrious Event Committee members, we set records. In 2010, we raised \$470,000 and topped that in 2011 with \$515,000! Thanks to **Vicki Demo** ('10), **Chris Dunne** ('11) and **Katherine Kelton** ('10 and '11) for leading us to such great success!

A two-bagger.

When the Bongiovanni and Caddick families ask *Child Advocates* Staff Attorney Marti Little whether any of her child clients happen to be Phillies fans, she never hesitates. Marti knows exactly which kids will appreciate this extraordinary opportunity most – the two who throughout their difficulties, remained as devoted to the Phillies as we are to our child clients. And yes, their reaction to the news was worth twice the price!

Event Highlights (con't)

Bar Association 5K Run/Walk

On the Sunday after Mother's Day thousands of runners gather on Martin Luther King, Jr. Drive for the **Annual Philadelphia Bar Association 5K Run/Walk**, benefitting *Child Advocates*. We raised more than \$110,000 for Philadelphia's abused and neglected children. On May 16, 2010, 1594 runners came out to support *Child Advocates*; on May 15, 2011 there were 1504. Through generous sponsorships and the registration fees, we are able to raise more than \$100,000 each year to provide services to the boys and girls in our care. We are ever grateful to the Philadelphia Bar Association for supporting our work with such wonderful spirit. A special thanks goes to **Manny Pokotilow, Eric Marzluf** and **Michael Berkowitz** of Caesar, Rivise, Bernstein, Cohen & Pokotilow for their inspired leadership in planning such a successful event each year.

Annual Golf Classic

Our **Annual Golf Classic** raises much needed funding for our **Project for Medically Needy Children**. Hosted at Huntingdon Valley Country Club on the first Monday of October, this event invites golfers to tee up for kids with severe or chronic medical needs.

In 2009 we began partnering with Cleantech Alliance Mid-Atlantic (CAMA) to bring new friends in the clean energy industry out for a day of golf for our kids. Together, we raised over \$63,000 in 2009 and nearly \$71,000 in 2010.

Many thanks to our outstanding Golf Classic Committees, especially Chairs **Ken Davis** and **Sherri Krensel** (2009) and **Chris Dunne, Kathy Jaffari** and **Matt Siegel** (2010).

Frank Cervone and Chandra Palmer with former client, Ricky and his caregiver, Kiera Thomas Moore.



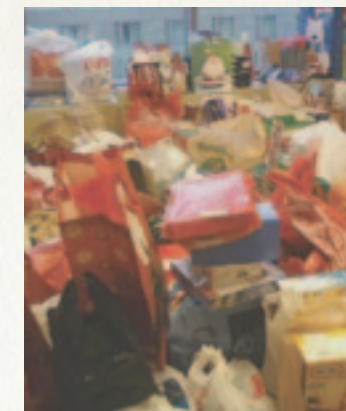
Starting line.



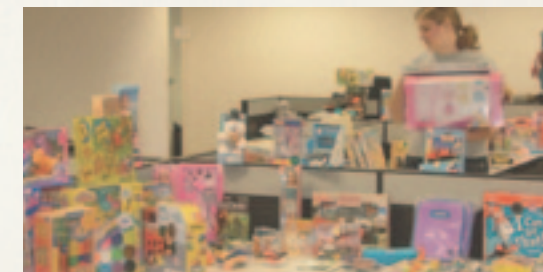
Holiday Toy Drive

The Annual Toy Drive continues to inspire! Not even a blizzard could stop us on in '09. Braving the stormy weather, our stalwart volunteers delivered thousands of toys to hundreds of boys and girls throughout the region. No snow could keep us from bringing the holiday spirit to our kids!

Toy Drive 2010 was another spectacular day. The weather cooperated, and with the help of more than 100 volunteers, we sorted toys to be delivered to 965 children. More than 60 drivers showed up on December 16th Delivery Day to personally hand over bags of toys and clothes for our child clients and other children in their homes. Many thanks to all donors who make this joyous day possible. We are especially grateful to our volunteer Toy Drive Coordinators, **Jeff Kahn** ('09) and **Eric Malis** ('10), who contributed countless hours to ensure a happy holiday for so many kids.



Rooms filling up with toys.



Changing luck; changing lives.

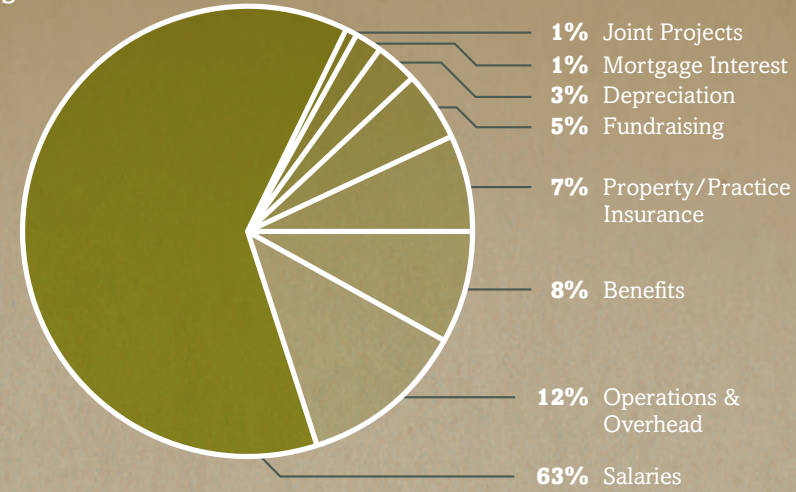
So here we are, Phillies vs. Cleveland Indians. The rain pours down, the fans wait breathlessly in the stands as Chris throws out the first pitch. It's amazing – it's perfect – it sets up the home team for a 12 to 3 win. Once again demonstrating that, with the help of our fans, we can and do change the story. (Unfortunately, we couldn't do anything about the rain.)

Financials

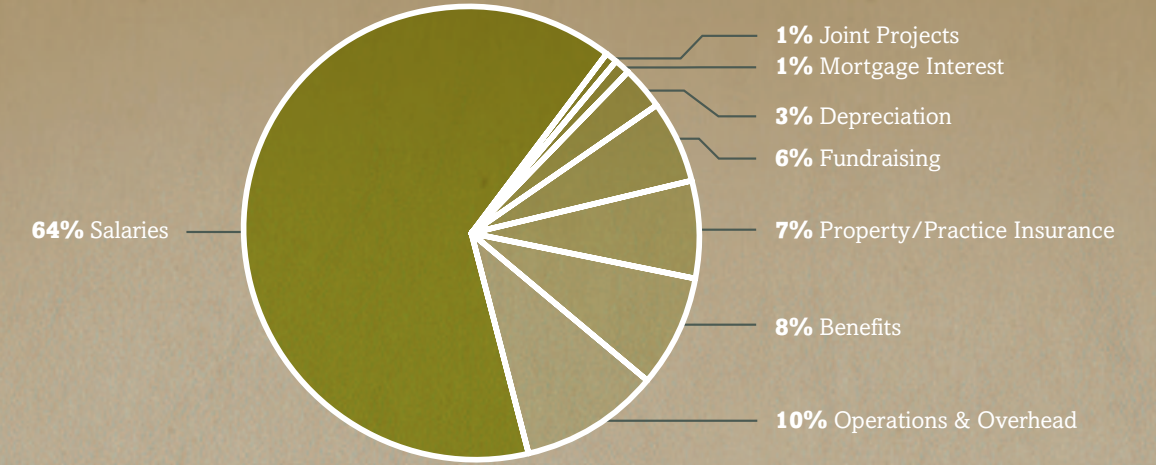
Only 23% of *Child Advocates'* funding comes from government grants. The majority of our annual budget is comprised of the financial support of generous donations as outlined below.

FY10 Budget was \$2,130,084
 FY11 Budget was \$2,176,049

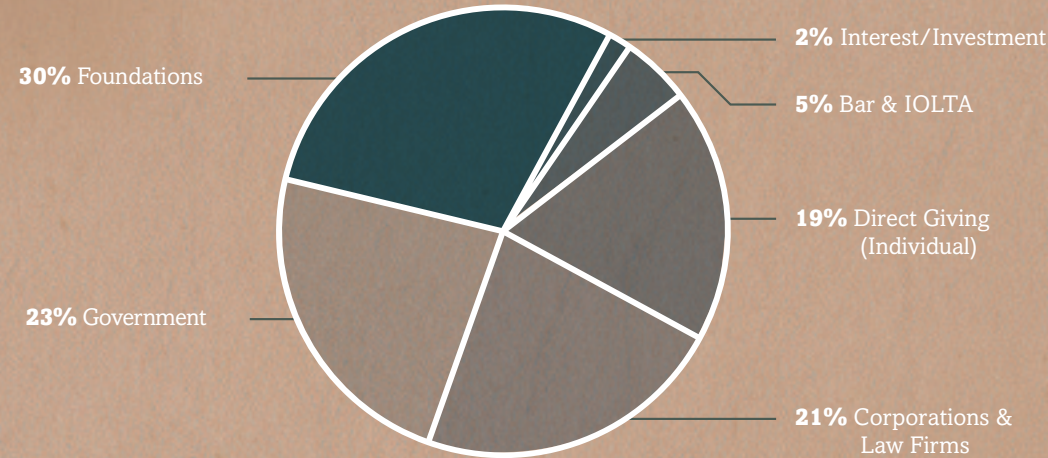
2010 Expenses



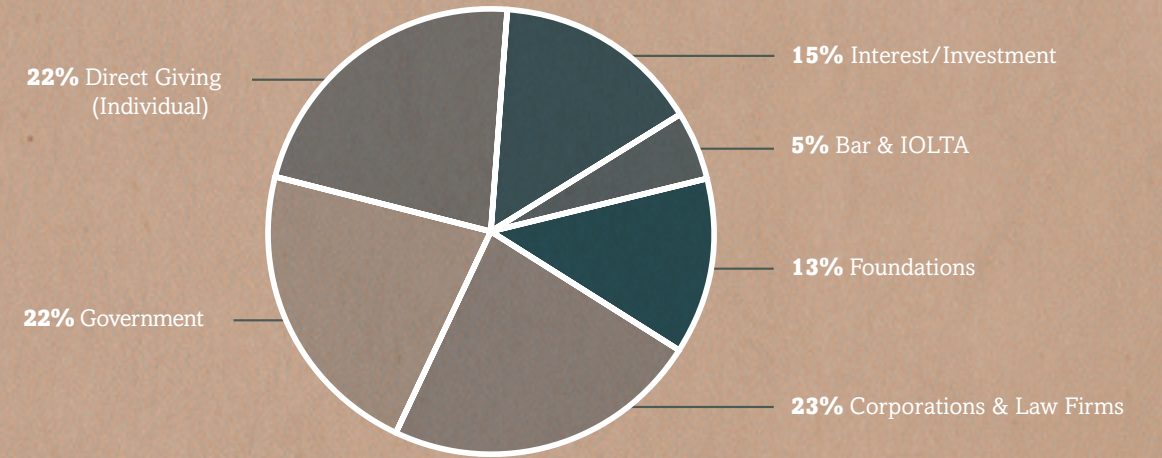
2011 Expenses



2010 Revenue



2011 Revenue



Thanks to All Our Supporters

Support Center for Child Advocates is deeply grateful for the support of so many generous individuals, foundations, corporations and law firms who make our work possible.

We take great care to ensure accuracy; however, mistakes can occur. Please report any discrepancies to Moira Mulrone, Director of Development & Communications, (267) 546-9208.

2010 Donors

\$100,000 to \$150,000

First Judicial District of Pennsylvania

Estate of Marthe LaVallee-Williams
VOCA-Pennsylvania Commission on Crime and Delinquency

William Penn Foundation

\$25,000 to \$99,999

The Abington Foundation
City of Philadelphia

Claneil Foundation, Inc.

Hess Foundation

The Horace W. Goldsmith Foundation

Independence Foundation

McEldrew & Fullam, PC

Morgan, Lewis & Bockius LLP

PA IOLTA

The Pew Charitable Trusts

Philadelphia Bar Foundation

Victims Services-District Attorney's Office

\$10,000 to \$24,999

1675 Foundation

Ballard Spahr LLP

Ellan & Leonard Bernstein

Buchanan Ingersoll & Rooney PC

Casey Family Programs

Deborah & Robert Cohen

Cozen O'Connor

First Hospital Foundation

Gateway Funding

The Genuardi Family Foundation

GMAC Mortgage

Suzanne & Jeffrey Kahn

The Patricia Kind Family Foundation

Marguerite & H. F. Lenfest and
Pembroke North Condominium

Maureen Tate &
Gerald McHugh

Francis Milone

Maida Milone

The McLean Contributionship

National Children's
Law Network

Pepper Hamilton LLP

The Philadelphia Foundation

Adele & Harold Schaeffer and
Innisfree Foundation

The E. Rhoda Shaten
Charitable Foundation

Paula & Mark Solomon

Stoneleigh Foundation

Tides Foundation

Turning Points for Children

\$5,000 to \$9,999

Ajamie LLP

Akin Gump Strauss Hauer &
Feld LLP

Anonymous

Blank Rome LLP

Patricia & Richard Bongiovanni and
Richard A. Bongiovanni
and Associates

The Children's Hospital of
Philadelphia

CIGNA Foundation

Cohen, Seglias, Pallas,
Greenhall & Furman, PC

Jill & Neal Colton

Comcast Corporation

Lisa Castleton & Stephen Console

Console Law Offices LLC

Dechert LLP

Dolfinger-McMahon Foundation

Drinker Biddle & Reath LLP

Duane Morris LLP

Firsttrust

Fox Rothschild LLP

Esther & Robert Fox

A. Nicole Friant

Gibbons, PC

Green Tree Community
Health Foundation

Hangley Aronchick Segal & Pudlin

The Thomas Skelton Harrison
Foundation

Hoxie Harrison Smith Foundation

Katherine Kelton &
Troy Graham

Marshall Dennehey Warner
Coleman & Goggin

Carolyn & Slade McLaughlin

Dolores & Lawrence Miller &
Miller Family Foundation

MYPHL17

Navigant Consulting, Inc.

New Century Trust

The November Fund

Phillies Charities, Inc.

PNC Foundation

Reed Smith LLP

James Ronca

Suzanne Root

Sandals & Associates, PC

Terri Decker & Adam Shapiro

Adrienne Simmons & Bradley
Sheares and The Sheares
Family Charitable Foundation

Stradley Ronon Stevens &
Young, LLP

Tucker Law Group

The Wachovia Wells Fargo
Foundation

Workplace Environments 2000

\$2,500 to \$4,999

Ava & Richard Aljian

American Furniture
Installation, Inc.

Anapol, Schwartz, Weiss, Cohan,
Feldman & Smalley, PC

Arronson Foundation

Kimberly & Dwayne Barr

Bartlit Beck Herman Palenchar &
Scott LLP

Bederson & Company LLP

Beneficial Bank

Donna & David Caddick and
Caddick Construction Co., Inc.

Susan & Lee Cassanelli

Mary Bradley &
Mary Louise Cervone

CIGNA Corporation

Citizens Bank

Coleman | Nourian

Combined Federal
Campaign Anonymous

Crown Holdings, Inc.

Susan Charleston & Ken Davis

James DeCrescenzo
Reporting, LLC

eXude Benefits Group

Feldman Shepherd Wohlgelernter
Tanner Weinstock Dodig

Mindy & Thaddeus Fortin

Amy Fox & Daniel Wheeler

Paulette & Lawrence Fox

Andrea & Kenneth Frazier

Nancy Fullam

Janis & Stephen Goodman

Independence Blue Cross

Thomas Jefferson University

Johnson & Johnson Family of
Companies

Kline & Specter, PC
Landmark Legal Solutions

Jill & Paul Lauricella

Susan & Lawrence Levy

LM Charitable Gift Trust

Cheryl Martin

McCarter & English, LLP

Patricia McCausland

McDonnell & Associates, PC

Jami Wintz McKeon &
John Holloway

The Memton Fund, Inc.

Merck & Co., Inc.

MillCrest Law LLP

Karyn Scher & Edward Ohlbaum

Panitch Schwarze Belisario &
Nadel LLP

ParenteBeard LLC

Helen & Charles Persing

Philadelphia Bar Association

Post & Schell, PC

PRWT Services, Inc.

Ratner Prestia

Raynes McCarty

Elizabeth & James Reeves

Rohm and Haas Company

Saul Ewing LLP

Pam & Tony Schneider

Shook, Hardy & Bacon L.L.P.

Shor Levin & DeRita PC

Mary Gay Scanlon & Mark Stewart

StoneMor Partners, LP

Susquehanna Foundation

Swartz Campbell LLC

Bernadette & Joseph Tate

Teknion LLC

Thorp Reed & Armstrong, LLP

USI Affinity

Valley Forge Consulting
Group, Inc.

Villari, Brandes & Kline, PC

Wawa Inc.

Weber Gallagher Simpson
Stapleton Fires & Newby LLP

White and Williams LLP

Whole Foods Market

Arlene Yocum & Richard Kremnick

Zarwin Baum DeVito Kaplan
Schaer & Toddy PC

Susan & Thomas Zipfel

\$1,000 to \$2,499

ACE Group

The Allstate Foundation

Susan Kressly &
Gregory Anderson

ARAMARK Corporation

Archer & Greiner, PC

Asterion, Inc.

Gail Greenspon & Ross Attix

Lori & Michael Banks

Barrack, Rodos & Bacine

Berger & Montague, PC

Toni Seidl & Richard Berkman

Berner Klaw & Watson LLP

Bildersee & Silbert, LLP

Susan & Glenn Blumenfeld

Harris Bock

The William & Kathleen Brady
Foundation, Inc.

Sarah Bricknell

Brightside Academy, Inc.

Andrea & Louis Broad

Colleen & John Broderick

Patricia Brooks

Gardenia & David Brooman

Caesar, Rivise, Bernstein,
Cohen & Pokotilow, Ltd.

Eileen Cameron

Capital Project Management, Inc.

Louis N. Cassett Foundation

Christie, Pabarue,
Mortensen & Young, PC

Liz Claiborne Foundation

Gretchen & J. Gordon Cooney

Margaret & Robert Cort

Margaret & Sean Crinnion

Day & Zimmermann Group, Inc.

Delaware Investments

Victoria Demo

Susan Dornstein & Gary Deutsch

Missy & Rudolph Di Massa

Diakon Lutheran Social Ministries

DiBona Family Foundation

DLA Piper

Ellen & Matthew Duncan

Eckert Seamans Cherin &
Mellott, LLC

Eisenberg, Rothweiler, Winkler,
Eisenberg & Jeck PC

Pam & Jack Ende

Equal Justice America

Tamsin & Scott Fast

First American Title Insurance
Company

Ann & Richard Flannery

Flaster Greenberg, PC

Pamela & W. Roderick Gagne

Gay Chacker & Mittin, PC
Amy Ginsky &
Andrew Rogoff
Angelina & James Grasty
Willig, Williams & Davidson
Martin Greitzer
Beth & Christopher Hanssens
Lynne & Harold Honickman and
The Honickman Foundation
IncisiveMedia
Katayun Jaffari
Johnson Controls
Susan & Geoffrey Kahn
Debra Markowitz &
David Kaplan
Margot & Robert Keith
Susan & Leonard Klehr
Gina & Andrew Klein
Karen & Stuart Lessin
Sara & Lawrence Levan
Richard Levan
LevLane
The Lida Foundation
Littler Mendelson PC
Lubert-Adler Partners, LP
Phyllis & Fred Magaziner
Manko, Gold, Katcher & Fox, LLP
The Martin Foundation
Maxwell Strawbridge
Charitable Trust
Susan & Darryl May
Margaret & Paul McCausland
McGuireWoods LLP
Margaret & Edward Merves
Judith & Marshall Meyer
The Judith and Marshall Meyer
Foundation, Inc.

Barbara & Howard Meyers
James Modersui
Montgomery, McCracken,
Walker & Rhoads, LLP
Meta & Benjamin Neilson
Felicia & Glenn Newman
Tecla Borick & Karl Okamoto
Martha Ortiz & Robert Diamond
Kimberly & Carl Oxholm
Parkway Corporation
PEI-Genesis
PNC Financial Services Group
Lindsey & Lawrence Pockers
Sherri & Abraham Reich
Rocco Law Offices, LLC
RT Environmental Services, Inc.
Ronald Rubin
Susan Rubinovitz
Susan & Paul Saint-Antoine
Pauline Scavino
Jodi Schatz & Dean Jerrehian
Schnader Harrison Segal &
Lewis LLP
Alice Schwartz &
Mario Pisaneschi
Dorian Smith
SMR Legal Search
Anne & William Stassen
Emilie & James Steigerwald
Stevens & Lee PC
Subaru of America
Foundation, Inc.
Diane & John Sullivan
Tactix Real Estate
Advisors, LLC
TAIG Foundation
TD Bank

Eleanor Thompson
TIFF Advisory Services
Eric Tilles
Trial Technologies, Inc.
Trico Steel Company, LLC
Veritext
Washburn University
School of Law
Deborah & Andrew Whitney
XL Capital Ltd
\$500 to \$999
Donna Adelsberger & Associates
Jennifer & Hugh Anderson
Auto Dealers CARing for
Kids Foundation
Barbara Beckman &
Joseph Flanagan
Elizabeth & Thomas Bell
Elizabeth & Norbert Bergholtz
Madeleine Sann & Richard Birns
Mary & Joseph Bongiovanni
Jennifer Weiner & Adam Bonin
Gary & Jennifer Bragg
Mary & Michael Broadhurst
Burns, White & Hickton, LLC
Business Intelligence Associates
Theodore Caldwell
Kimberly & Bart Cassidy
The Andrea Cavitolo Foundation
Chimicles & Tikellis LLP
Citizens Bank Foundation
Cogan, Petrone & Associates
Abbi Cohen &
Thomas O'Connell
I.L. Cohen Foundation
Cohen, Placitella & Roth, PC

Linda & Douglas Copersmith
Marti & John Cunningham
Beth Cutler
Stacey & Jeffrey Daman
Candy & Tad Decker
Deeb Petrakis Blum &
Murphy, PC
DeMarco and DeMarco, PC
Deutsche Bank Americas
Foundation
Dickstein & Scutti
Jonathan Edelman
Nancy & Thomas Eshelman
Exelon Business Services
Company, LLC
Shannon & Edward Farmer
Jacqueline Farrell-Mulholland &
Terrance Mulholland
Debra Fickler &
G. Steve Russell
Arlene Fickler
Fine, Kaplan & Black, R.P.C
Agnes & Paul Finigan
Amy Foran
Nancy Fox & Jon Edwards
Dina & Michael Galeotafiore
Geppert Brothers, Inc
Mark Gittelman
Jane & Allan Greenspan
Judith Harris
Randi & John Harris
Health Partners Foundation
Eileen Kennedy & Robert Heim
Ellen & Douglas Heller
Susannah Henderson &
Ryan Dunne
Patricia Hobbib

Elizabeth & Gordon Hughes
IKON Office Solutions
Interior Environments
Nadia & Stephen Jannetta
Erin & Matthew Jones
Barbara & Charles Kahn
Klasko Rulon Stock &
Seltzer, LLP
Debra Fine & Kenneth Kleinman
Sharon L. Klingelsmith &
Anthony B. Cummings
Rita & Lawrence Kotler
Timothy Law
Judy Leone
Adelaide Feguson &
Alan Lerner (deceased)
LLR Partners, Inc.
Mary Rose & Dennis Lynch
Cheryl Maddox
Robert Marchand
Maron Marvel Bradley &
Anderson, P.A.
Martin, Banks, Pond,
Lehocky & Wilson
McCann & Geschke, PC
Raymond McCullough
Karen & Harry McWilliams
Alice Meehan
Rosanne Mistretta &
Steven Miano
Anna & Christopher Mikson
Miller-Worley Foundation
Maureen Mingey
Barbara & Jeremy Mishkin
Jean Montanez
Manuela Morais
Mary & Robert Mulhern

Julie Murphy
Nancy & Jonathan Newman
Obermayer Rebmann
Maxwell & Hippel LLP
Marilyn O'Connell
Cecelia O'Shea-Rome
Pansini & Mezrow
Pennsylvania Bar Institute
Philadelphia Insurance
Foundation
Roberta Pichini
Marcy Panzer &
Manny Pokotilow
Jill Porter & Fred Hamilton
Rawle & Henderson LLP
Norma & Lawrence Reichlin
Stephanie Resnick
Jane & William Robinson
Lesley & Ralph Rodak
Theresa & John Rollins
Joseph Ronan
Anita Rosenfeld
Evelyn & Paul Rudinoff
Sage Financial Group
Saltz Mongeluzzi Barrett &
Bendesky PC
Patrica & John Schreck
Christopher Seda
Firouz Sepahi
Sheller Family Foundation
Shane & Matthew Siegel
David Silverman
Shira & Stuart Sklar
Bonnie & Michael Smith
Marc Sonnenfeld
Margaret Stein & Larry Fine

Neil Stein
Subaru of America, Inc.
SWE Homes, LP Management
Charles Thompson
Anita & W. Anson Tinney
Mary Walrath & Edward Toole
Tyco International
United States Liability
Insurance Group
U.S. Trust, Bank of America
Private Wealth Management
United Way Anonymous
Carol & John VanLuvanee
Laura Vendzules &
W. Raymond Owens
Villanova University
School of Law
Volpe and Koenig, PC
Ilene Wasserman & Mark Taylor
West Pharmaceutical Services
Constance & Sankey Williams
\$250 to \$499
Donna Adelsberger &
David Trevaskis
Thomas Alexander
Judith Algeo & Frank Cervone
Jo Rosenberger Altman &
Adi Altman
Albert Arbogast
Dorothy Arimond &
Brian Connolly
Stanley Askin
Barbara Ayes
Michelle & Jeffrey Barrack
Cathy & Saul Behar
Lawrence Bistany

William Black
Anne Graber Blazek
Merrilee Weiss Bodzin &
Robert Bodzin
Mary Beth Bongiovanni
Margaret Boylan
Rochelle & Bennett Broad
Marcy & Dan Brody
Joyce & Ronald Burd
Francis Cauffman Architects, Ltd.
Jacquelyn Caridad
Carin Carlson & Ronald Fisher
CDI Properties
Marisa Chandler
Elisa & Michael Colkitt
Michelle & Joseph Conners
Martha & Howard Coonley
Cooper, Bushelli & Morrison LLC
Nancy Crouse
Nancy & Francis Crowley
Patricia & Honorable
Charles Cunningham
Susan Danielski
Judith & Gerard Davies
De Lage Landen Financial
Services
Delaware Valley Chapter of the
Assoc. of Corporate Counsel
Carol Dembe
Tamra & John Dodds
Diana & Stuart Donaldson
Dilworth Paxson LLP
Gail & Mark D'Urso
Cynthia & James Eiseman
Anthony Evangelista
Barbara Fanelli

Rochelle & William Fedullo
R. Brendan Fee
Feldman & Feldman, LLP
Elizabeth & H. Robert Fiebach
Brenda Fingold & Daniel Geffken
Phyllis & Howard Fischer
Ellen & James Flatt
Floss Barber, Inc.
Barbara & John Forer
Galfand Berger, LLP
Judith & Richard Gelles
Brian Gleason
Dana & Jacob Goldberg
Goldberg, Miller & Rubin, PC
Linda & David Groverman
Matthew Gutt
Anthony Haller
Mary Hardy
Nancy Hartenstine
Judy & William Harrington
George Hartnett
Marian & Stephen Harvey
Katherine & R. Radcliffe Hastings
Catherine Heilferty
Abby & Eric Hocky
Jackie & Aram Jerrehian
Jewish Federation of
Greater Philadelphia
Tonya Johnson
Barbara & Gregory Joseph
Kelleher Associates, LLC
Jo Ann Kelton
Alan Klein
Mary & Justin Klein
Mary Ann Kleschick
Eve & Kenneth Klothen

Kovler & Rush, PC
Ronald Kovler
Jennette & Louis Kozloff
Sherri & Ernest Krensel
LBC Credit Partners
Karen & Ric Lentz
A. Kristina & M. Jared Littman
Theresa Loscalzo
Charisse Lillie & Thomas McGill
Tina & Robert McLaughlin
Lavin, O'Neil, Ricci,
Cedrone & DiSipio
Dionna & Robert Litvin
Main Line Financial Advisors
Dorothy Malloy & Robert Bader
Elizabeth Malloy
Eric Marzluf & Gene de Nicolais
McGinley Family Foundation
Maureen McGinty
Mary McGovern
Kevin Montague
Linda Montemayor
Yvonne Montgomery
Cathy Moore
Patrick Mullen
Martine & Subhash Mundle
Marguerite Nealon
Kathy Ochroch &
Peter Hilton-Kingdon
Kimberly & Michael Olsan
Patricia & Timothy O'Toole
Payne Advisory, LLC
Pfizer
Stephanie Pindyk-Costantino
Susan Polin-Schwartzberg &
H. Lee Schwartzberg

Shannon & Peter Prown
Nancy & Coy Purcell
Elizabeth & Spencer Rand
Brenda Rich
Adam Rifkind
Beth & Alan Ritterband
Maryann Rodriguez
Andrew Rolfes
Ira Rosen
Rona Rosen & Mark Cohen
Nancy & Matthew Rosin
Lisa Heller & Harry Roth
Charles Rouman
Joan Ruttenberg
Patricia Santelle
Katherine Sarlson &
Gonen Haklay
Mary & Stephen Scherf
Stefanie & Alex Seldin
Rachel Sheikh
Miriam & Arthur Siegel
Stanton & SaraKay Smullens
Solloff & Zervanos, PC
Cassie Solomon
Linda & Robert Stache
Michael Steinberg
Antoinette Stone
Iwona & Anthony Stover
Ronald Street
Keith Stroup
Technical Advisory Service
for Attorneys
M. Susan Toth
Judy Turetsky &
F. Scott Beadenkopf
Geoffrey Underwood

Stephanie & Henry Unger
Christina & Francis Venezia
Catherine Walters
Lisa & Greg Warshaw
Nancy Vogt & Kenneth Warren
Michele & Lyle Washowich
Gail & Peter Weintraub
Rashida West
Nancy & David Winkler
Honorable Flora Wolf
Worth & Company, Inc.
Julie Zanaras
Jacqueline & Thomas Zemaitis
Janice & Michael Zipfel

2011 Donors

\$100,000 to \$150,000

First Judicial District of
Pennsylvania
VOCA-Pennsylvania Commission
on Crime and Delinquency
William Penn Foundation

\$25,000 to \$99,999

City of Philadelphia
First Hospital Foundation
PA IOLTA
Philadelphia Bar Foundation
The Pew Charitable Trusts
Victims Services-District
Attorney's Office

\$10,000 to \$24,999

Ally Financial
Ellan & Leonard Bernstein

Mary Bradley &
Mary Louise Cervone
Deborah & Robert Cohen
Jill & Neal Colton
Cozen O'Connor
Exelon Business Services
Company, LLC
Amy Fox & Daniel Wheeler
Independence Foundation
The Patricia Kind Family
Foundation
Marguerite & H.F. "Gerry" Lenfest
Karen Lessin & Stuart Lessin
Francis Milone
Maida Milone
Leo Model Foundation, Inc.
Adele & Harold Schaeffer
and Innisfree Foundation
The E. Rhoda Shaten
Charitable Foundation
Adrienne Simmons & Bradley
Sheares and The Sheares
Family Charitable Foundation
Paula & Mark Solomon
Alicia Horn & Joe Tucker and
Tucker Law Group
Women's Way

\$5,000 to \$9,999

1675 Foundation
American Academy of Matrimonial
Lawyers Foundation
Anonymous
Lori & Michael Banks
Blank Rome LLP
David & Donna Caddick and
Caddick Construction Co., Inc.
The Charter Foundation
The CHG Charitable Trust
The Clayman Family Foundation
Console Law Offices LLC
Terri Decker & Adam Shapiro
Drinker Biddle & Reath LLP
Firsttrust
Penny & Bob Fox
Andrea & Kenneth Frazier
The Fridolin Charitable Trust
Hoxie Harrison Smith Foundation
Lisa Kabnick & John McFadden
The November Fund
Karyn Scher & Edward Ohlbaum
O'Melveny & Myers LLP
Penn Consulting Group, P.C.
PricewaterhouseCoopers LLP
Raynes McCarty
Elizabeth & James Reeves
Suzanne Root
Mary Gay Scanlon & Mark Stewart
Swartz Campbell LLC

\$2,500 to \$4,999

Judith Algeo & Frank Cervone
Archer & Greiner, P.C.
Arronson Foundation
Asher & Company, Ltd.
Kimberlee Washington Barr &
Dwayne Barr
Bartlit, Beck, Herman,
Palenchar & Scott, LLP
Joseph Beach
Berger & Montague, PC
Borislow, Factor & Kaufmann, LLC
Andi & Louis Broad
James Bryson

Caesar, Rivise, Bernstein,
Cohen & Pokotilow, Ltd.
CIGNA Foundation
Comcast Cable
Communications, LLC
Crown Holdings, Inc.
Susan Charleston & Kenneth Davis
Tamsin & Scott Fast
Feldman, Shepherd, Wohlgelemer,
Tanner, Weinstock & Dodig
Mindy & Thaddeus Fortin
Paulett & Lawrence Fox
Pamela & W. Roderick Gagne
Gateway Funding
Gibson Dunn & Crutcher LLP
Janis & Stephen Goodman
The Honickman Foundation
The Hurlburt Foundation
Katayun Jaffari
The Robert Wood Johnson
Foundation
Barbara & Charles Kahn
Katherine Kelton & Troy Graham
LevLane
Susan & Lawrence Levy
The Lomax Companies
Margolis Edelstein
McDonnell & Associates, PC
Maureen Tate & Gerald McHugh
Jami Wintz McKeon &
John Hollway
The Memton Fund
MillCrest Law, LLP
Dolores & Lawrence Miller and
Miller Family Foundation
ParenteBeard, LLC
Post & Schell, PC

Pam & Tony Schneider
Toni Seidl & Richard Berkman
Shook, Hardy & Bacon, LLP
Michele & Steven Stadlin
Bernadette & Joseph Tate
TD Bank
Marjorie & Michael Thackray
USI Affinity
The Thomas Skelton Harrison
Foundation
ViroPharma Incorporated
Ilene Wasserman & Mar Taylor
White and Williams, LLP
Workplace Environments
Henrietta Tower Wurts Memorial
Zarwin, Baum, DeVito, Kaplan,
Schaer & Toddy, PC
Sima & Kevin Zlock and
Zlock & Snyder, PC

\$1,000 to \$2,499

Asterion, Inc.
Bank of America
The Barra Foundation
Beveridge & Diamond, PC
Bildersee & Silbert, LLP
Jill & Sheldon Bonovitz
The William & Kathleen Brady
Foundation
Sarah Bricknell
Patricia Brooks
Amanda Bruno
Capital Project Management, Inc.
The Louis N. Cassett Foundation
Kimberly & Bart Cassidy
Sheila & Edward Chacker
Gretchen & J. Gordon Cooney

Margaret & Sean Crinnion
Cummins Power Systems, Inc.
James DeCrescenzo
Reporting, LLC
Joe DeSimone
Susan Dornstein & Gary Deutsch
Missy & Rudolph Massa
John DiLello
Document Technologies, Inc.
Ellen & Matthew Duncan
Nicholas Durso
Valerie & D. Rodman Eastburn
Eisenberg, Rothweiler, Winkler,
Eisenberg & Jeck, PC
Ernst & Young
eXude Benefits Group
FB Capital Partners, LP
Ann & Richard Flannery
Flaster Greenberg, PC
Geraldine & Richard Fox
A. Nicole Friant
Gibson & Behman, P.C.
Amy Ginenesky & Andrew Rogoff
Mark Gittelman
Linda & David Glickstein
Dave Godin
Angelina & James Grasty
The Florence E. and Daniel B.
Green Family Foundation
Martin Greitzer
Beth & Christopher Hanssens
Thomas Jefferson University
Susan & Geoffrey Kahn
Debra Markowitz & David Kaplan
Susan & Leonard Klehr
Gina & Andrew Klein

Sherri & Ernest Krensel
Susanna Lachs & Dean Adler
Marcum LLP
Maron, Marvel, Bradley &
Anderson, PA
The Martin Foundation
Maxwell Strawbridge
Charitable Trust
Susan & Darryl May
McCausland & McCausland LLC
McGuireWoods LLP
Alice Meehan
Barbara & Howard Meyers
Emily & Lawrence Miller
Montgomery, McCracken,
Walker & Rhoads, LLP
Meta & Benjamin R. Neilson
O'Brien & Ryan
Kathy Ochroch &
Peter Hilton-Kingdon
Tecla Borick & Karl Okamoto
Oxford Legal Associates
Panitch, Schwarze, Belisario &
Nadel, LLP
Parkway Corporation
PEI-Genesis
Helen & Charles Persing
Philadelphia Association of
Paralegals
Philadelphia Eagles, LLC
Marcy Panzer & Manny Pokotilow
Rawle & Henderson, LLP
Sherri & Abraham Reich
Todd Reider
Reilly, Janiczek & McDevitt, P.C.
Jane & William Robinson
Nancy & John Rogers

Deborah Baird & James Ronca
RT Environmental Services, Inc.
Ronald Rubin
Susan & Paul Saint-Antoine
Pauline Scalvino
Jodi Schatz & Dean Jerrehian
Schnader, Harrison, Segal &
Lewis, LLP
Alice Schwartz &
Mario Pisaneschi
The Sidley Austin Foundation
The Sprague Foundation
Anne & William Stassen
Emilie & James Steigerwald
Stevens & Lee, PC
The Susquehanna Foundation
Tactix Real Estate Advisors, LLC
Audrey Talley
Thorp, Reed & Armstrong, LLP
Eric Tilles
Trial Technologies, Inc.
Union Benevolent Association
Veritext
Deborah & Andrew Whitney
\$500 to \$999
Donna Adelsberger & Associates
Dorothy Arimond & Brian Connolly
Barroway, Topaz, Kessler,
Meltzer & Check, LLP
Bederson & Company, LLP
Beneficial Bank
Elizabeth & Norbert Bergholtz
Janice & Tom Biron
William Black
Harris Bock
Mary & Joseph Bongiovanni

Joseph Bordogna
Cheryl Bowden & Steven Johnson
Michael Boyle & Gregory Murphy
Carolyn Brodsky
Gardenia & David Brooman
Burns White
Citizens Bank
The I.L. Cohen Foundation
Christie & Thomas Comerford
Mary & James Conlan
Martha & Howard Coonley
Cooper, Morrison & Dunne
Linda & Douglas Coopertsmith
Margaret & Robert Cort
Marti & John Cunningham
Candy & Tad Decker
Sheila & James DeCrescenzo
Deeb, Petrakis, Blum & Murphy, PC
Jenny & Lawrence DeMarco
Victoria Demo
Dickstein & Scutti
Brian Donadio
Diana & Stuart Donaldson
Loretta & Joseph Duckworth
Genny & Christopher Dunne
Kathleen Egan
Andrea & Mark Eisold
Pamela & Jack Ende
Nancy & Thomas Eshelman
Mary Espey
Shannon & Edward Farmer
David Faw
Attarah Feenane
Debra Fickler & G. Steve Russell
Agnes & Paul Finigan
Christina & Gary Fink

First American Title
Insurance Company
Mary & Alan Fisher
William Galbally
Anne Gallagher &
Richard O'Malley
Honorable Jane & Allan Greenspan
Gail Greenspon & Ross Attix
Marguerite Gualtieri &
Dennis Roberts
Jean Harper
Margaret Harris and Philip Straus
Judith Harris
Heffler, Radetich & Saitta, LLP
Ellen & Douglas Heller
Susannah Henderson &
Ryan Dunne
Marnie & Fred Henretig
William Hoke
Lynne & Harold Honickman
Ruth & Richard Horowitz
Katherine Hovde & Kenneth Kulak
Elizabeth & Gordon Hughes
IKON Office Solutions
Nadia & Stephen Jannetta
Deborah & Stuar Kurtz
Kelleher Associates, LLC
Marshall King
Klasko, Rulon, Stock &
Seltzer, LLP
Kline & Specter, P.C.
Sharon Klingelsmith &
Anthony Cummings
Rita & Lawrence Kotler
Avery Kuflik
Angelique & Kuchta &
Mike Ippolito

Judy Leone
Elissa Lewis
Mary Rose & Dennis Lynch
Manko, Gold, Katcher &
Fox, LLP
Robert Marchand
Marks, O'Neill, O'Brien &
Courtney, PC
Martin Banks
McCann & Geschke, PC
Ellan & Edward McCann
Margaret & Paul McCausland
Patricia McCausland
Darius Mehraban
Kathleen Meriwether &
Thomas Mahoney
Ania & Christopher Mikson
Dolores & Lawrence Miller
Barbara & Jeremy Mishkin
Rosanne Mistretta &
Steven Miano
Daniel Monagle
Manuela Morais
Mary & Robert Mulhern
Ellen & Michael Mulroney
Deborah Nason
Naulty, Scaricamazza, &
McDevitt, LLC
Obermayer, Rebmann,
Maxwell & Hippel, LLP
Kimberly & Michael Olsan
Pansini & Mezrow
Phillies Charities, Inc.
Roberta Pichini
David Pittinsky
Lindsey & Lawrence Pockers
Baba Renfrow

Stephanie Resnick
Lesley & Ralph Rodak
Theresa & John Rollins
Joseph Ronan
Carol Rosenthal
The Frederic Royston Trust
Evelyn & Paul Rudinoff
Madeleine Sann & Richard Birns
Schaff & Young PC
Christopher Seda
Stefanie & Alex Seldin
Sandra & Stephen Sheller
Mitchell Shore
Shrager, Spivey & Sachs
Ann & Edward Sickles
Shane & Matthew Siegel
Shira & Stuart Sklar
Phyllis & Richard Slocum
SMR Legal Search
Marc Sonnenfeld
John Sperger
Antoinette Stone
Stradley, Ronon, Stevens &
Young, LLP
Subaru of America, Inc.
Eleanor Thompson
Roberta Torian
Carol & John VanLuvaneee
Laura Vendzules &
Raymond Owens
Sherry & Charles Vetterlein
Volpe and Koenig, PC
Mary Walrath & Edward Toole
Jennifer Weiner & Adam Bonin
Weir & Partners, LLP
West Pharmaceutical Services

Honorable Constance &
Sankey Williams
Willig, Williams & Davidson
Etta Winograd
Nancy & David Winkler
Honorable Flora Wolf
Joan Yue
\$250 to \$499
Cathy Abelson
Donna Abraham
Honorable Lynne Abraham
Donna Adelsberger &
David Trevaskis
Marta & Robert Adelson
Elizabeth & Charles Affel
Allied Mortgage Group, Inc.
Felice Andola
Mary & Evan Avgerinos
Peter Batchelor &
Associates, PC
Eileen & Richard Bazelon
Barbara Beckman &
Joseph Flanagan
Jenna Berman
Harriet & Louis Berneman
Lawrence Bistany
Susan & Glenn Blumenfeld
Merrilee Weiss Bodzin &
Robert Bodzin
Carolyn & Brendan Bovaird
Lea Bramnick
Patrick Brennan
Martin Brigham
Joyce & Ronald Burd
William Burnett
Theodore Caldwell

Mari Campbell
Jacquelyn Caridad
Francis Cauffman Architects, Ltd.
Chimicles & Tikellis LLP
Cindy & Peter Christian
Ciardi, Ciardi & Astin
Paula Clark & Robert J. Miller
Susan & Richard Coe
Rona & Mark Cohen
Robin & David Comerford
Michelle & Joseph Connors
Chris Connors
Patricia & Charles Cunningham
Susan Danielski
DGA Partners
Herb Deutsch
Debra & Harris Devor
Daniel DiMucci
Tamra & John Dodds
John Domzalski
Betsy & Kevin Donohoe
Elaine & Lee Dushoff
Jeanne Dworetzky
Cynthia & James Eiseman
JoAnne Epps
Laure Ergin
Kristin Everitt
Maureen & Kevin Farrell
Feldman & Feldman, LLP
Honorable Happy & Dick Fernandez
Arlene Fickler
Fleischer, Fleischer and Suglia
Barbara & John Forer
Nancy Fox & Jon Edwards
Steven Freedman
Galfand Berger, LLP

Gay, Chacker & Mittin, PC
Cheryl & Richard Gelber
Judith & Richard Gelles
Tanya Gidaro
Therese Gillespie
Brian Gleason
Goldberg, Miller & Rubin, PC
Rodney Green
Jodi Greenspan
Francis Grube
Louise & Matthew Gutt
Donna & David Haas
Stanley F. Hack Charitable
Lead Unitrust
Maryann & Patrick Hagan
Anthony Haller
Nancy Hartenstine
Marian & Stephen Harvey
Katherine & Radcliffe Hastings
Health Partners
Annamarie &
M. Stroud Hellebusch
Lisa Heller & Harry Roth
High Swartz, LLP
Hofstein, Weiner & Levit, P.C.
Betsy & Robert Horen
Mary Hugues
Interior Environments
Jacobs Law Group, P.C.
Cathy Johnson
Barry Kahan
Suzanne & Jeffrey Kahn
The Kaplan Foundation
Pat Kempsey
Eileen Kenney

The Kestenbaum Family
Foundation
Klehr, Harrison, Harvey,
Bransburg & Ellers LLP
Jessica & Mitchell Klein
Alan Klein
Mary Kleschick
Kovler & Rush, P.C.
Anne Kringel & Wendell Pritchett
Wendi Kromash
Sayde & David Ladov
Martin Lautman
Lavin, O'Neil, Ricci,
Cedrone & DiSipio
Ann Lebowitz
Richard A. Levan & Associates, PC
The Levitt Foundation
Charisse Lillie & Thomas McGill
Laurence Liss
Michael Lord
Meredith & Jeffrey Lutsky
Cheryl Maddox
Elizabeth Malloy
Melissa & Stuart Margulies
George Martin
Eric Marzluf & Gene de Nicolais
Barbara Mattleman &
Dean Kaplan
Raymond McCullough
Justine & Daniel McGinley
The McGinley Family Foundation
Janice & Edward McGinn
James McMullen
Donna McWilliams
Iris Melendez & Henry Adamczyk
Mary Metzler
Carol Mager & James Donohue

Ann Micka
Miller, Downey, Spevak &
Kaffenberger, Ltd.
Maureen Mingey
Momjian Anderer
Linda Montemayor
Cathy Moore
Angela & Joseph Mullan
Moirra Mulrone & Chris Hatch
Eleanor Myers
Stephen Nardi
New Century Trust
Felicia & Glenn Newman
North American Publishing
Company
Fred Ochroch
Marilyn O'Connell
Payne Advisory, LLC
Karen & William Pohlmann
Jill Porter & Fred Hamilton
Shannon & Peter Prown
Adam Puff
Jacey Raimondo
Elizabeth & Spencer Rand
Angelina & Kenneth Rapchick
Margery & Raymond Reed
Vincent Reilly
Adam Rifkind
Ross Riley
Andrew Rolfes
Rosenthal Lurie LLC
Sue Rubel
Sage Financial Group
Patricia Santelle
Jonathan Schiffman
Sara Schuh
Mary Scout & Peter Scout

Carole & David Sheffield
Myrna Shure
Miriam & Arthur Siegel
Celestine & David Silverman
Phyllis Simon & David Abernethy
Susan Sorenson
Megan Spitz & Eric Milby
Emilie & James Steigerwald
Marjorie Stein & Larry Fine

David Stewart
Janet & Seymour Stotland
Judy Stouffer
James Strazzella
Keith Stroup
Pamela & Andrew Christian
Technical Advisory Service
for Attorneys
Transition Strategies, LLC

Judy Turetsky & F. Scott
Beadenkopf
The Wachovia Wells Fargo
Foundation
Robert Wachter
Betsy Walton
Cindy & Larry Wanerman
Jan & Randy Weinstock
Ann & Neil Witkes

Shelly Yanoff & Gerry Kaufman
Alan Yousha
Jacqueline & Thomas Zemaitis
Janice & Michael Zipfel

More than 1,400 donors made gifts
from \$1 to \$99. We regret that we
cannot list all donors, and we know that
every dollar helps change the story.

2010 & 2011 In-Kind Donations

We receive numerous gifts in kind throughout the year, helping us bring goods to our clients and supplying the Annual Benefit Reception silent auction with items for bid. We are grateful to all who have made in kind donations. The following individuals and companies have made significant contributions to *Child Advocates*.

Judith Algeo & Frank Cervone
American Dental Concepts
Auto Dealers CARing for
Kids Foundation
B101
Patricia & Richard Bongiovanni
Dan Brody Photography
Brooks
Caddick Construction Co., Inc.
Donna & David Caddick
Kim & David Caddick, Jr.
Caesar, Rivise, Bernstein,
Cohen & Pokotilow, Ltd.
Susan & Lee Cassanelli
Comcast Corporation
Comcast Spectacor
Harry Cooper

Margaret & Robert Cort
Susan Charleston &
Kenneth Davis
Frank DeGiulio
Duane Morris LLP
Ginny & Chris Dunne
First American Title
Insurance Company
Carin Carlson & Ronald Fisher
Fox Family
Ellen & James Flatt
Bruce Foolke
Penny & Bob Fox
Pamela & W. Roderick Gagne
GameStop
D. Douglas Gastone
Golden Inn Hotel

The Golf Channel
Good Shepherd
Mediation Program
Iron Mountain
JNA Materials
Lisa D. Kabnick &
John McFadden
Suzanne & Jeffrey Kahn
Cathy & Daniel Kaufman
Keenan Motor Group
Denise Yonkoske &
Franklin Kelton
Kramer Portraits
The Legal Intelligencer
Karen & Stuart Lessin
LevLane
Loews Philadelphia Hotel
Melanie McLaughlin
Moore Brothers Wine Company
Ellen & Michael Mulrone
Neiman Marcus
Nodding Head Brewery
Thomas G. Oakes Associates
Philadelphia 76ers
Philadelphia Coca Cola
Bottling Company

Philadelphia Eagles
Philadelphia Runner
Platoon Fitness
Marc Platt Productions
Marcy Panzer & Manny Pokotilow
Reliable
Saul Ewing LLP
Mary Gay Scanlon &
Mark Stewart
Alice Schwartz &
Mario Pisaneschi
J. Schwartz Construction
Adrienne Simmons &
Bradley Sheares
Sprout
Steen Outdoor Advertising
Susan & Jan Stefanski
Carl E. Steinberg
Janet & Seymour Stotland
Subaru of America, Inc.
Nora & Thomas Tammany
Roseann Termini
Weir & Partners LLP
Signe Wilkinson
Etta Z. Winograd

2010 & 2011 Volunteer Attorneys

So many attorneys have graciously contributed their talent and time to our children over the years. The following individuals had an open case between July 1, 2009 and June 30, 2011.

Anne M. Aaronson
Amanda Abrams
Taimarie Adams
Donna L. Adelsberger
Michael E. Adler
Andrew W. Allison
Jessica Altman
Lauren V. Amjed
Jennifer L. Anderson
Mary Kathleen Anthony
Meredith M. Armstrong
Joseph A. Arnold
Stanley R. Askin
Karen E. Atzert
Christina E. Audigier
Joseph J. Baldassari
Caroline D. Bar
Ned E. Barlas
Jeffrey A. Barrack
John F. Barrett
Richard B. Bateman
Joseph A. Battipaglia
Barbara R. Beckman
Saul A. Behar
Jenna Berman
Leonard A. Bernstein
Rachel E. Bernstein

Emily Bieber
Alexander R. Bilus
Lawrence J. Bistany
Frederick E. Blakelock
Susan B. Blumenfeld
Janet M. Bollinger
Robert M. Boote
Christopher A. Bradley
Jennifer L. Bragg
John J. Branigan
William S. Braveman
Lauren A. Brill
Andrea Broad
Michael P. Broadhurst
Andrea P. Brockway
Emily T. Brody
Kelly A. Brogan
David J. Brooman
Allison M. Brown
David W. Brown
Amanda M. Bruno
Brett D. Buick
Michael S. Burkhardt
Susan F. Burt-Collins
Kristyn L. Byrnes
Kristine Calalang
Marissa K. Capizzi

Gregory S. Capps
Jacquelyn A. Caridad
Candace M. Centeno
Catherine M. Chan
Virginia Chentis
Erica R. Cline
Andrew B. Cohen
Deborah F. Cohen
Bess M. Collier
Marla K. Conley
Robert T. Connor
Samantha L. Conway
Nicole R. Corkery
Melissa A. Cornibe
Franco A. Corrado
Marion Cowperthwait-Murray
Shanna Cramer
Joseph D. Cronin
Edward L. Crow
Francis X. Crowley
Mary C. Cunnane
Beth S. Cutler
Donna R. Daly
Jeffrey K. Daman
Sarah E. Davies
Kenneth J. Davis
Zara K. Davis
Pedro de la Torre
Walter H. De Treux
Michele L. Dean
V.P. DePillis
Patricia H. Dervish
Neha Desai
Gary A. Deutsch
Regina B. Diamond

Mark J. Dianno
Mindy F. Dickinson
Joel L. Dion
Linda Dobbins
Kimberly M. Dolan
Eileen V. Dooley
Sonya Dore
Virginia W. Dorsey
Brett K. Dougherty
Laura B. Dugan
Matthew H. Duncan
Christopher E. Dunne
Desinee R. Dwyer
David V. Dzara
Robert L. Ebby
Ashling A. Ehrhardt
Thomas K. Ellixson
Lori M. Emrick
Pamela P. Ende
Rebecca L. Engel
JoAnne A. Epps
Katherine A. Etherington
Patricia A. Eynard
Christopher C. Fallon
Shannon D. Farmer
Paul L. Feldman
Shaune E. Ferrara
William H. Finlay
Samantha B. Fisher
Gina K. Florez
Susan Flynn
Regina Foley
Karen L. Forman
Lauren A. Fox

Michael R. Fox
Brian W. Franklin
Timothy M. Fraser
Christine M. Fredericks
Steven B. Freedman
A. Nicole Friant
Maria Frigoletto
Tara A. Frohner
Nancy H. Fullam
Alfred Fuscaldo
Roxanne D. Galeota
Meredith A. Galto
Stephanie P. Gantman
Alicia A. Garcia
John G. Gaul
Susan M. Gibson
James T. Giles
Jasroop Gill-Gakhal
Robyn Goldenberg
Brandon L. Goodman
Mary Beth H. Gray
Leslie M. Greenspan
Joy F. Grese
Jessie M. Gross
Feige M. Grundman
Amy R. Guerin
Matthew M. Gutt
James P. Hadden
Deeya Haldar
Matthew J. Hank
Jennifer J. Hanlin
Virginia L. Hardwick
Michael B. Hayes
Elizabeth J. Hecht

Susannah R. Henderson
Grace K. Henry
Lynda M. Henry
Joshua D. Hill
Christopher D. Hinderliter
Lindsey E. Hoban
Lauren J. Hofmann
David N. Hofstein
Michael D. Homans
Pia N. Horton
Rosemarie S. Hoslyn
Joseph L. Hoynoski
Sarah R. Humble
Katherine A. Isard
Mu'min Islam
Samuel H. Israel
Katayun I. Jaffari
Jamie M. Jamison
Jaime L. Jano
Jennifer R. Johnson
Kate L. Jones
Lev Kalman
Christine Kane
Tina R. Karkera
Katherine M. Katchen
Elizabeth E. Kearney
Carrie E. Kehner
Meghan R. Kelly
Katherine M. Kelton
Erin E. Kepplinger
Patricia Kipnis
Matthew N. Klebanoff
Andrew D. Klein
Melissa B. Knoerzer

Lisa P. Kohn
Louis H. Kozloff
Leslie Kramer
Christina J. Kubiak
Angelique R. Kuchta
Patricia C. Kulp
Tara G. La Fiura
Gregory B. Lare
Jason T. LaRocco
Jennifer LaTour
Monica M. Lawrence
Rhonda P. Lee
Scott M. Lempert
David S. Leone
Natalie Lesser
Danielle L. Letting
David Levenberg
Meixian Li
Jonathan Light
Molly K. Light
Stacy N. Lilly
Kristen D. Little
A. Kristina Littman
Andrea V. Lockenour
Isla M. Long
Richard A. Louisell
Romola O. Lucas
Daniel J. Luccaro
Denise E. Lynch
Tracy A. Mack
Gina MacNeill
H. W. J. Maddox
Jennifer E. Magness
Michael Z. Mandale

Rachel M. Mandell
Anne M. Manero
Gail Marcus
Nina Markey
Derek T. Marks
Maylee M. Marsano
James W. Martin
Laura C. Mattiacci
Carol McCabe
Charles W. McCammon
Margaret A. McCausland
Patricia A. McCausland
Joan M. McClenney
Matthew J. McConnell
Raymond L. McCullough
Courtney S. McDonnell
Elisa P. McEnroe
Todd S. McGarvey
Edward J. McGinn
Maureen L. McGinty
Paul T. McGurkin
William C. McMahan
Peter J. McNamara
Warren T. Meltzer
Janie S. Mershon
Michael F. Metzger
Christopher M. Mikson
Ami S. Mody
Amy L. Montemarano
Erin C. Montgomery
Peter J. Mooney
Fenita Moore
Julie M. Murphy
Amy L. Neher

James J. Nicolo
Donald A. Nogowski
Ellen Noteware
Oleg V. Nudelman
Caitlin E. Oberst
John J. O'Brien
Kathy E. Ochroch
John A. O'Donnell
Eugena C. Oh
Kenny J. Oh
Maureen F. O'Hara
Edward D. Ohlbaum
Meredith Q. Olearchik
Barri A. Orlow
Corey M. Osborn
Donna E. Ostroff
Margaret O. Padilla
Kathleen P. Parks
Raymond A. Patella
Jonathan D. Pavlovcak
Yarmela Pavlovic
Molly Peckman
Tara M. Pellicori
Joyce K. Petrenchak
Stephanie P. Pindyk-Costantino
Wayne S. Pinkstone
Joan E. Plump
Lawrence H. Pockers
Karen P. Pohlmann
Lisa L. Prince
Michael J. Puma
Christopher E. Pushaw
Paul Quinones
Randi Rabinowitz

Melissa W. Rand
Spencer Rand
Stephanie D. Rauch-Mannino
Catherine O. Raymond
Chauvron S. Regis
Nicole M. Reimann
Nicholas Rems
Mark L. Rhoades
Nancy G. Rhoads
Fahd Riaz
Joseph H. Riches
Jessica A. Rickabaugh
Adam P. Rifkind
Marirose Roach
James E. Robinson
Margaret E. Rodgers-Schmidt
Andrew J. Rolfes
Carrie B. Rosen
Jo A. Rosenberger Altman
Joseph D. Rossi
Blake D. Roth
Karen M. Sanchez
Helen R. Santoro
ShaVon Y. Savage
Mary Gay Scanlon
Caren M. Schiffman
Tracy E. Schloss
Sarah D. Schlossberg
Joshua C. Schumacher
Neil C. Schur
H. Lee Schwartzberg
Katharine Scrivner
Jennifer L. Seme
Aimee M. Sherrock

Matthew J. Siegel
Marc M. Silbert
Adrienne D. Simmons
Nefertiri Smarr
Bernadette T. Smith
David W. Smith
Kimberly D. Smith
Megan E. Spitz
Thomas A. Spratt
Judy M. Springer
Derek H. Squire
Ashley D. Staller
David J. Stanoch
John S. Stapleton
William H. Stassen
James H. Steigerwald
Heather A. Steinmiller
Jill E. Sterbakov
Betsy F. Sternthal
Catherine Stewart
Clair Stewart
Mark S. Stewart
Keith T. Stroup
Jeffrey A. Sturgeon
Leslie A. Sudock
William F. Sutton
Mark W. Tanner
Kathleen H. Taylor
William J. Taylor
Heather Tereshko
Allan A. Thoen
Andrew J. Thomson
Michelle L. Tiger
Patrick Timoney

Robert S. Tintner
Albert J. Toczydlowski
Alexandra H. Tomich
M. S. Toth
Ashley M. Tucker
Claire H. Van Til
Susan Varghese
Alyson B. Walker
Jennifer L. Walker
Nancy A. Walker
Maurice L. Waller
Carley Ward
Kimberly T. Washington
Megan E. Watson
Elizabeth A. Weill
Debra A. Weinrich
Kali T. Wellington
James A. Wells
Kilus J. White
Andrew C. Whitney
Theodore P. Winicov
Stephanie Wisdo
Brett A. Wolfson
Bethany N. Wong
Donna J. Wren
Marianne R. Yudes
Joanne E. Zack
Michael P. Zipfel
Thomas C. Zipfel

We take great care to ensure accuracy; however, mistakes may occur. Please report any discrepancies to Jodi Schatz, Director of Intake & Pro Bono Services, (267) 546-9228.

December 2009 & 2010 Toy Drive Coordinators

The Annual Toy Drive is a joyful tradition that provides gifts and toys to every child within our care each year. Hundreds of people donate thousands of toys. We are grateful to every person who donates a gift, helps to sort toys and makes the deliveries. We are especially thankful for the following people who coordinated efforts at their places of business and within their communities to make the Toy Drive an enormous success.

Michael Adler
Sharon Alexander
Maritza Alvarado
Mary Alvarino
Kelly Batiancila
Lytanja Beulah-Jones
Kimberly Biederman
Mary Beth Bongiovanni
Mary Bove
Lisa Broaddus
Jessica Brunner
Annemarie Carrasquillo
Denise Caruso
Susan Church
Michael Churchill
Judi Ciaranca
Noelle Connor
Susan Console
Meg Cranford
Ligiane deCarvalho
Mary DeFalco
Karren DeSeve
Michelle Donato-McNichol
Carol Donner
Sonya Dore

Joyce Duckenfield
Diana Everett
Laura Eyring
Nancy O'Mara Ezold
Janet Fasy
Stacey Ferraro
Christine Flynn
Crystal Garcia
Kelly Gastley
Ryan Gatto
Tamara Gilles
Winnie Gilmore
Robyn Goldenberg
Barbara Gontkof
Karen Graham
Gill Gutteridge
James Hadden
Beth Hanssens
Carmen Heath
Susan Heckrotte
Rose Hendricks
Whitney Johnson
Katherine Kelton
Joann Kelton
Anne Marie Kerr

Michael Kirn
Jessica Klein
Mary Kowalczyk
Dottie Kruc
Anne Kunz
Anne LaBoon
Ronaldlyn Latham
Carolyn Latimore
Lily Leong
Lisa Lewis
Christine Littman
Maggie Lozada
Denise Lynch
Olivia Lysch
Marlene Mackason
Emily Malinowski
Maddy Malis
Marisol Matos
Katie McCormack
Megan McCrea
Rachel McNally
Vince McNeil
Diana Miller
Dolores Miller
Gisela Miller
Simon Nagel
Angeline Newell-Reed
Elizabeth Nourian
Lauren Nuttle
Mei O'Neill
Rebecca Owens
Rosemary Pagano
Ray Perry
Cheryl Polchenko
Jill Porter
Shannon Prown

Marialisa Ramirez
Veleska Redon
Christine Reilly
Cheryl Rogers
Bernadette Romano
Carol Rosenthal
Karen Sanchez
Sandy Schaffer
Katie Scrivner
Liz Selmer
Chris Shayka
Terri Siebels
Nicole Simon
Karen Sinclair
Kathryn Skira
Wanda Smith
Tasha Stonorov
Kathy Strailey
Diane Sullivan
Audrey Talley
Diane Todd
Catherine Van Arsdale
Anna Vaughan
Liz Wagner
Rita Walls
Lisa Washington
Erica Wechsler
Erica Weissmann
Jen West
Tammy White
Kathy Youngman

■ With special thanks to Jeff Kahn (2009) and Eric Malis (2010) who dedicated countless hours to ensure the success of the Annual Toy Drive!

Change the story.

1900 Cherry Street • Philadelphia, PA 19103



Epilogue

Chris and Megan have been living with their cousin in GA for the last six months. He is trying to adopt them but the paperwork takes time. Both kids are doing great. They are happy and healthy and love school.

They have finally found a safe and nurturing home.

There are so many more stories that need changing.
Learn more at advokid.org.

SUPPORT
center
FOR
child
advocates



Legal and Social Services for Children