

CHANGE CHITHE STORY

2014-2015 BI-ANNUAL REPORT



Inside, first responders found four children (ages 5, 7, 10 and 12) sitting on the bare floor – with no running water, no food, no electricity, no working toilet... and no hope for the future.

The youngest was Jonathan. Scared, cold and confused. Cockroaches crawling around his feet. He had just witnessed the death of his three-year-old sister Jaclyn, now being taken away in an ambulance, a victim of unspeakable neglect.

Jonathan needed food. He needed water. He needed immediate medical attention. He needed strength. He needed support.

He needed someone to change the story.

DEAR FRIENDS,

At Support Center for Child Advocates (*Child Advocates*), we meet our children during some of their darkest days, and we make all efforts to bring light to their lives, to give them a chance at a better future.

While we are appointed to represent children in court, we come into their lives wanting to do so much more. Through our unique practice of providing “whole child” representation (pairing together a staff Child Advocate Social Worker with a Volunteer Attorney), we seek the best for each child through high-quality legal representation and advocacy for appropriate social services. It takes some time, but step by step, we see lives improve. Our clients’ homes are safer, their families are more loving and supportive, and they receive the help they need. Children are resilient, and we rejoice when they begin to grow and flourish. We are their advisors, champions and friends. Most of all, we want their lives to be free from trauma and fear and full of joy and peace.

Child Advocates is also evolving. This bi-annual report looks back at Fiscal Years 2014 and 2015, a time of enormous growth. *Child Advocates* is committed to representing more than 1,000 children and youth annually, an increase of more than 100 clients since our last Bi-Annual Report. We have increased our staff and resources so that our caseloads are manageable and the quality of our service remains high. In 2014, we launched the Center for Excellence in Advocacy to train more lawyers and laypeople to better serve children throughout the region. We created Project YES! (Youth Educational Success) to advocate for the educational needs of our clients. *Child Advocates* staff members also remain active industry leaders for reform and are proponents of improving the child welfare system.

We want to acknowledge many people for contributing to our successes – volunteers, donors, sponsors, and supporters of all types. Thank you for being our friend, so we can do all we can for our children and our future.

In gratitude,



MARK A. GITTELMAN
President



FRANK P. CERVONE
Executive Director

**NO ONE COULD
GET THROUGH
THIS ALONE.**

Not Jonathan, not his siblings, not his new foster parents. The Court appointed *Child Advocates* to the case. Quickly calling on a longtime *Child Advocates* Volunteer Attorney to work alongside a staff social worker, our team went to work to support these children in any way we could.

If Jonathan needed his big sister Jordanna in the bunk bed above him... someone had to make that happen. If his foster family felt overwhelmed... someone needed to provide support. When the social worker and volunteer team looked for guidance... they found that the *Child Advocates* staff was always there.

Child Advocates made a vow to be with Jonathan every step of the way. A promise that big is worth keeping.

ABOUT SUPPORT CENTER FOR CHILD ADVOCATES

Founded in 1977, Support Center for Child Advocates is the country's oldest and largest pro bono legal and social service advocacy agency for children.

Our mission is to advocate for victims of child abuse and neglect with the goal of securing safety, justice, well-being and a permanent, nurturing environment for every child.

At *Child Advocates*, we pair specially-trained Volunteer Attorneys with experienced staff social workers to serve our clients through a "whole child" representation model that requires our teams to understand all facets of the child's life, including behavioral health, physical health and educational needs.

Our dedicated Board of Directors provides diligent fiscal and programmatic oversight as well as strategic vision for our future. Thousands of generous donors and lay volunteers help make our work possible.

Since our inception, *Child Advocates* has trained more than 8,000 attorneys who help better the lives of our extraordinary children. We could not be more grateful to all those who support our mission. Together, we change the story.

WHAT WE HAVE ACHIEVED (FISCAL YEARS 2014 & 2015)

OVER 1,000 STORIES CHANGED

In 2014 the Philadelphia Family Court asked us to increase the number of children we represent. We went from providing high quality advocacy to more than 920 clients in FY14 to serving a record 1,028 clients in FY15. With the growing number of children in the child welfare system, *Child Advocates* remains a top resource for representing children in civil and criminal child abuse proceedings, domestic relations and custody disputes, and those in need of special immigration status.

OVER 350 VOLUNTEER ATTORNEYS DONATED MORE THAN 35,000 HOURS

For the past two years, *Child Advocates* Volunteer Attorneys dedicated up to \$5.1 million worth of legal services to our young clients. Our volunteers and staff provided the positive relationships and mentoring essential to a child's participation in the service planning process. This work helps to achieve permanency in up to 93% (93% in FY14; 91% in FY15) of all cases.

FOR A CASE
THIS SEVERE,
WITH SUCH
EXTREME LAYERS
OF TRAUMA,
A SUPPORT SYSTEM
MUST BE CREATED.

Alongside the Department of Human Services, *Child Advocates* sought a permanent home for Jonathan with his sister Jordanna, and helped maintain regular visits with his brothers. Keeping the siblings connected would be a vital part of their healing.

While bonding with his new family, and with his recovery underway, Jonathan's *Child Advocates* team advocated for him to receive trauma-based therapy. Our Volunteer Attorney gave him a voice in court and collaborated with the District Attorney's Office as they brought Jonathan's parents to justice for the death of his baby sister.

Our team also worked hard to help Jonathan's foster parents meet his needs. Together, they began to better understand the boy's struggles and how to help him, going forward, to build trust, bond, and explore the benefits of permanent adoption.

PROJECTS AND OUTCOMES

PROJECT YES! – ADDRESSING EDUCATIONAL NECESSITIES

Children who move from home to home also move from school to school, leading to prolonged absences, missing records, and deficits in achievement that can be hard to overcome. Launched in FY14 and led by Education Law Attorney **Megan Rok**, *Child Advocates'* educational initiative, **Project for Youth Educational Success (Project YES!)**, ensures that children receive the necessary educational advocacy in both court and school proceedings. Megan consulted on 125 cases where clients experienced education problems. Forty-eight of these clients required particularly intense work to address very complex issues.

Project YES! funders include **Dana and Andy Stone, the Jaffari Family, Abington Foundation, Connelly Foundation, Honickman Foundation, Hoxie Harrison Smith Foundation, Huron Foundation, Lindback Foundation and Nelson Foundation.**

LGBTQ YOUTH PROJECT – FIGHTING AGAINST INTOLERANCE

In our **Lesbian, Gay, Bisexual, Transgender, and Questioning (LGBTQ) Youth Project**, *Child Advocates* provides safety and hope to youth within the Philadelphia dependency system who are marginalized due to sexual orientation, gender identity or gender expression. In FY14 we secured positive permanency outcomes for 91% of the cases closed, a figure that dropped to 45% in FY15 due to the large number of older teens who refused care and were not yet in permanent homes. However, 55% of our LGBTQ Youth Project clients excelled in school that year, with two enrolling in post-high school education or training programs. Led by Child Advocate Social Worker **Mili Roca**, the **LGBTQ Youth Project** was highlighted in the April 2015 issue of *GPhilly*.

We thank **Samuel S. Fels Fund, Thomas Skelton Harrison Foundation and Spruce Foundation** for their continued support.

PROJECT FOR MEDICALLY NEEDY CHILDREN – SEVERE ABUSE LEADS TO SEVERE MEDICAL NEEDS

Child Advocates seeks to improve the health and safety of that special population whose medical needs are the result of, or led to, serious abuse or neglect. In FY14 we served 140 children with a 93% rate of permanency outcomes. In FY15 we served 194 children with a 91% permanency rate. In addition to the special advocacy for this extraordinary population of clients, every month the Project staff attorney **Lindsey Alexander** works with The Children's Hospital of Philadelphia to expose their medical residents to the child welfare system and introduce them to the special legal needs of children with chronic health issues in foster care.

This vital project is funded through the proceeds of our annual *Child Advocates* Golf Classic and the generosity of **Altria Companies Employee Community Fund, Claneil Foundation and Fridolin Charitable Trust.**

OUTCOMES IN BEHAVIORAL HEALTH PROJECT – SUPPORTING MENTAL WELL-BEING

The **Outcomes in Behavioral Health (OBH)** Project focuses on developing relationships with children and those responsible for their well-being, including relatives, foster parents, *Child Advocates* attorneys, judges, private provider and county agency social workers, and other social service professionals. We utilize client engagement, direct representation and advocacy, and specially designed training sessions to expand support for this chronically underserved population. In both FY14 and FY15, 94% of children who needed behavioral health assessments received them. In FY14, 88% received the treatment prescribed. In FY15, that number increased to 94%. Our thanks to **1675 Foundation, Delaware County Community Foundation, the Genuardi Family Foundation, the Pew Charitable Trusts, Phoenixville Community Health Foundation, and George W. Rentschler Foundation** for making these outcomes possible.



NOW IN FIRST GRADE,
OPENING HIS FULL
LUNCHBOX AT A
SCHOOL CAFETERIA
TABLE FILLED WITH
MILK-MUSTACHIOED
FRIENDS, JONATHAN
IS THRIVING.

He can count by tens, spell his name, and sometimes sees his big sister Jordanna in the school hallways. And when Jonathan goes home, it's to parents who love him and care for him, help with homework, and tuck him into bed.

Jonathan's days of being neglected are over. It's time for him to shine.

LEADERSHIP

Our team of specialists are often asked to participate in leadership efforts, helping to set standards and advise on best child advocacy practices.

For the third consecutive year, Director of Social Work **Tracey Thomasey** was featured on WXPB's radio show, **Kid's Corner with Kathy O'Connell**. Tracey discussed depression in children and teens, shared effective ways to identify whether a child may be struggling, and described how to help.

In light of the child abuse allegations against Minnesota Vikings' running back Adrian Peterson, *Child Advocates* Executive Director **Frank Cervone** provided numerous interviews and comments regarding whether Peterson should be criminally charged. In addition, Frank has written op-eds including, "Law Catching up on Punishment vs. Child Abuse" in the *Philadelphia Inquirer*, clarifying the uncertain line between corporal punishment and abuse.

Frank Cervone also published an article, "Improving Representation and Outcomes for Children" in the *Legal Intelligencer*, calling for the child welfare system to consider the competing interests and information of children, their families, and lawyers to ensure practices that make the safety of children a top priority.

Child Advocate Social Worker **Laurie Ayler**, co-leader of the Outcomes in Behavioral Health Project, served on the **Psychotropic Medication Workgroup of the Statewide Children's Roundtable**. The group made recommendations to ensure that children with mental and behavioral health needs have a plan for appropriate and effective intervention in order to promote healthy development.

In 2013, Senior Staff Attorney **Barry Kassel** presented at the **Helping Hands Kinship Care Conference** for relatives who are raising children. Caregivers learned about their legal custodial rights, how to navigate the court system and how to better protect their families and future.

In 2014 **Frank Cervone** was appointed to the **Health Committee of Pennsylvania Governor-elect Tom Wolf's Transition Team** to guide delivery of quality healthcare to children and families.

Child Advocates led a statewide coalition of advocacy, social service and government entities in a **brief amicus curiae to the Supreme Court of Pennsylvania**, writing in support of the Philadelphia Department of Public Welfare's position that the standard of evidence for maintenance of an "indicated" perpetrator on the Child Abuse Registry should continue to be the long-standing statutory "substantial" rather than "clear and convincing" evidence standard. The Supreme Court issued a unanimous ruling adopting our position.

AWARDS

2013 PRO BONO PUBLICO AWARDS FROM THE FIRST JUDICIAL DISTRICT OF PENNSYLVANIA

Staff Attorney **Barry Kassel** and
Volunteer Attorney **Leslie Anne Sudock**

AMERICAN BAR ASSOCIATION MARK HARDIN AWARD FOR CHILD WELFARE LEGAL SCHOLARSHIP AND SYSTEMS CHANGE

Frank Cervone, for his dedication to children and recognized leadership in the child welfare field.

IKEA LIFE IMPROVEMENT CHALLENGE

Child Advocates
Nominated by IKEA Conshohocken, and supported by our readers and followers who voted online, *Child Advocates* received a "storehouse" of furniture, household goods, backpacks, toys and other items, a total value of approximately \$10,000, to benefit our clients and their families.

THIS STORY IS FAR FROM FINISHED.

Jonathan's dark past is receding into the distance. But there's still trauma to deal with, hurdles to climb, and progress, lots of progress, to be made. He now has a supportive family with his adoptive parents – the same foster parents who initially took him in! They also adopted his older sister Jordanna!

They make waffles on weekend mornings, and read stories every night. The kids have toothpaste for brushing. And packets of string cheese in the fridge. Jonathan has encouragement and compassion. His family is around him at home and his brothers are up the street. And with the Support Center for Child Advocates in his corner, he doesn't have to do it alone.

For the first time in his life, Jonathan is writing his own story.

FUNDRAISING, EVENTS AND DISTINGUISHED ADVOCATES

One of our greatest assets is the broad base of charitable donors who give throughout the year. As a growing agency, *Child Advocates* is always seeking ways to attract new donors and encourage prior donors to stay loyal to us. In FY14, we welcomed 599 new donors. In FY15, we had 435 more.

We have become actively involved in the #GivingTuesday movement. On the Tuesday after Thanksgiving weekend, donors make online donations to balance the days of consumerism. In each of the past two years, we exceeded our goals! Thanks to the **Sheares Family Foundation** and **JadeYoga** for supporting this new initiative.

BAR ASSOCIATION 5K RUN/WALK

Each spring, rain or shine, more than 1,500 runners, children and volunteers participate in the **Annual Philadelphia Bar Association 5K Run/Walk**. Moving the event to a new course at Fairmount Park in 2014, and again in 2015, participants ranging from avid athletes and competitive attorneys to family walkers and kids running in the **Buchanan Ingersoll & Rooney Kid's Dash**, came together to support our cause. We owe a special thanks to the leaders of **Caesar Rivise**, especially **Manny Pokotilow** and **Eric Marzluf**, for helping us plan such a lively and successful annual event, and helping to raise more than \$174,000 combined in 2014 and 2015.

CHILD ADVOCATES GOLF CLASSIC

Our annual fall **Child Advocates Golf Classic** encourages our participants to "Swing for Change," benefiting kids with severe chronic medical conditions through our **Project for Medically Needy Children**. By adding a tennis tournament in 2014, we saw an increase in participants, and raised over \$100,000 each year. A special thanks to our Classic Committees for all their hard work, especially our Chairs: **Kirk Katchen** and **Mike Verrill** (2013), **Joe DeSimone** and **Janie Mershon** (2013 and 2014), and **Chuck Persing** (2014).

HOLIDAY TOY DRIVE

More toys and more toys and more toys – what child wouldn't love that?! The **Holiday Toy Drive** continues to grow every year, and we couldn't be more excited. In 2013 over 70 drivers delivered toys to 1,250 children at more than 500 Philadelphia area locations. In 2014 some 80 drivers delivered toys to more than 1,400 children at 550 locations—our biggest Toy Drive yet! Supported by the **Independence Foundation**, our gratitude goes to all the volunteers who braved the cold and helped put a smile on the face of a child.

Several of our clients and their families were invited by **Angels of Christmas** to enjoy a festive holiday party and a visit with Santa. There was food and treats galore, and every child left with a sack full of toys!

ANNUAL BENEFIT RECEPTION & AUCTION

Every year we bring the community together at the Crystal Tea Room for our **Annual Benefit Reception & Auction** to recognize the dedication of our volunteers and leaders and celebrate the many transformed lives of our clients.

To acknowledge the efforts of those committed to our cause, the agency recognizes one leader each year with the Judge Lois G. Forer Child Advocacy Award. The awardees are those who share Judge Forer's extraordinary spirit and unrelenting advocacy for children, and they are dedicated to improving the lives of children and our community. In 2014 **Ed Satell**, one of the most effective champions for children and their development, received the award. The 2015 award went to **Kenneth C. Frazier**, Chairman and CEO of Merck, for his commitment to the health and well-being of youth by ensuring their access to justice through pro bono representation.

In 2014 we lost a dear colleague and influential advocate, Eddie Ohlbaum. In honor of his tremendous work as a trial lawyer and past Board member, we will keep his memory alive by recognizing leaders in child policy, governance, and trial advocacy who share his same passion through the **Eddie Ohlbaum Distinguished Advocate for Children Award**. Its first recipient was Blank Rome's **Lawrence Beaser**, honored for his extensive work in child policy and his contribution to the Pennsylvania Child Protective Services Law.

Child Advocates also recognized exemplary friends and allies with the Distinguished Advocates Award. Honorees included:

2014 Distinguished Advocates

Cynthia Certo, Segal McCambridge Singer & Mahoney, Ltd.

Jeffrey K. Daman, Daman LLC

Katayun I. Jaffari, Ballard Spahr LLP

Chris Kirchner, Philadelphia Children's Alliance

James E. Robinson, Gordon & Rees LLP

William H. Stassen, Fox Rothschild LLP

Anthony Stover, March of Dimes

2015 Distinguished Advocates

Alfred R. Fuscaldo, Gibbons P.C.

Jason T. LaRocco, Fineman Krekstein & Harris P.C.

Daniel J. Luccaro, Cozen O'Connor

George D. Mosee, District Attorney's Office of Philadelphia

Charles Persing, Bederson LLP

Lara Thane & Rae-Lynne Tuzzo, Adoptive Parents

Megan E. Watson, Berner Klaw & Watson LLP

Each year, after a moving awards ceremony, our guests enjoyed a lively cocktail party and auction, as they bid on more than 400 silent and live auction items. Prizes included exclusive access to villas in Tuscany and the south of France, sports tickets and memorabilia, jewelry and art, as well as a private dinner prepared specially by our very own Executive Director, **Frank Cervone**.

With over 100 sponsors each year and over 800 guests, we raised just over \$500,000 in 2014 and \$525,000 in 2015. We could not have done it without our dedicated Chairpersons: **Dena Goldberg** (2014), **Sherri Krensel** (2014 and 2015), **Kathy Ochroch** (2014 and 2015), **Jane Robinson** (2014), and **Suzanne Root** (2014 and 2015).

CAPACITY BUILDING

In FY14 *Child Advocates* contracted with the City of Philadelphia to accept more Family Court appointments, and now represents more than 1,000 child clients each year. With this increase in caseload, we hired Administrative Assistant **Chaneil Scott** and Educational Staff Attorney **Megan Rok**, and created four new Child Advocate Social Worker positions. With these increases and staff turnover, we welcomed the following social workers: **Cathy Behar**, **Tim Chambers**, **Erin Coltrera**, **Thaddeus Desmond**, **Emily Goss**, **Jessica Hayden**, **Patricia McGettigan**, **Djuan Short**, and **Briana Ventimiglia**. To accommodate our growing social work staff, **Naja Macon** was promoted to Social Work Supervisor.

In FY14 **Megan Stephens** joined *Child Advocates* as a one-year **Stoneleigh Emerging Leader Fellow**, to bring enhanced data-capture and analytical functionality to our new Case Management and Client Outcomes Measurement Database, an update later presented to foundation leaders and major donors.

TRAINING

Training was at the heart of *Child Advocates'* mission from its inception, inherent in our model of recruiting and preparing volunteer attorneys to represent children. In 2012, *Child Advocates* formally launched the **Center for Excellence in Advocacy (CEA)** to consolidate and expand these training efforts into a fully formed resource that has since provided 247 trainings to 7,517 professionals statewide. CEA is led by **Jodi Schatz**, Director of Intake and Pro Bono Services, and **Meghan Johnson**, MPH, CEA Project Manager. **Alexandra Dolan**, MSW, LSW, rounds out the team as our **Outcomes in Behavioral Health Training Coordinator**. We increased to four times a year our full-day training for attorneys, "How to Handle a Child Abuse Case," to provide volunteers with an overview of child welfare practices and victim services.

Our annual "Dependency Law Update," presented by Managing Attorney **Margie Gualtieri** and Senior Staff Attorney **Barry Kassel**, provides attorneys with an overview of new and updated case law. We have extended this training to include seminars in Chester, Montgomery and Philadelphia Counties. Through our OBH training initiative, *Child Advocates* has become a local leader in training lay and professional caregivers about children's behavioral health needs, including the impact of childhood trauma on development and how to advocate for trauma-informed services for children and families. In FY14 and FY15, we trained

over 700 people in a host of trauma-related topics in Philadelphia and the surrounding counties.

Child Advocates has been selected as a training provider for mandated reporters who are now required by state law to receive state-approved training on child abuse recognition and reporting. We have trained groups statewide on the legal and ethical duties of mandated reporters. **Frank Cervone** and Blank Rome partner **Larry Beaser** gave the keynote address at the **107th Pennsylvania Osteopathic Medical Association Annual Clinical Assembly** and provided mandated-reporter training to more than 550 medical professionals.

Child Advocates staff also offers high-caliber training at the national level. **Frank Cervone**, **Meghan Johnson**, **Laurie Ayler**, and **Alexandra Dolan** were presenters at the **American Bar Association Center on Children and the Law Conference** in Washington, DC.

CEA piloted its first webinar series in early 2015 with the **Juvenile Law Center**, attracting over 125 attendees from across Pennsylvania and several other states.

This work would not be possible without the generous support of the **1675 Foundation**, **Genuardi Family Foundation**, **Pennsylvania Commission on Crime and Delinquency**, the **Pew Charitable Trusts**, **Phoenixville Community Health Foundation**, and **George W. Rentschler Foundation**.

VOLUNTEERING

Child Advocates Volunteer Attorneys provide our clients with an invaluable service. They give children someone to talk to, someone to go to court with and, ultimately, a voice.

Every year, *Child Advocates* trains, mentors and supports hundreds of Volunteer Attorneys, who in turn provide much-needed legal representation for children in the child welfare system. While the number of children at risk remains constant, the downturn in the economy and resultant contraction of the private legal sector have reduced the number of attorneys available to do pro bono work. We need volunteers to join our cause, now more than ever, and continue to help us secure safety, justice, well being and a permanent, nurturing environment for every child.

CHANGE
THE
STORY

Learn how to help
by visiting advokid.org.

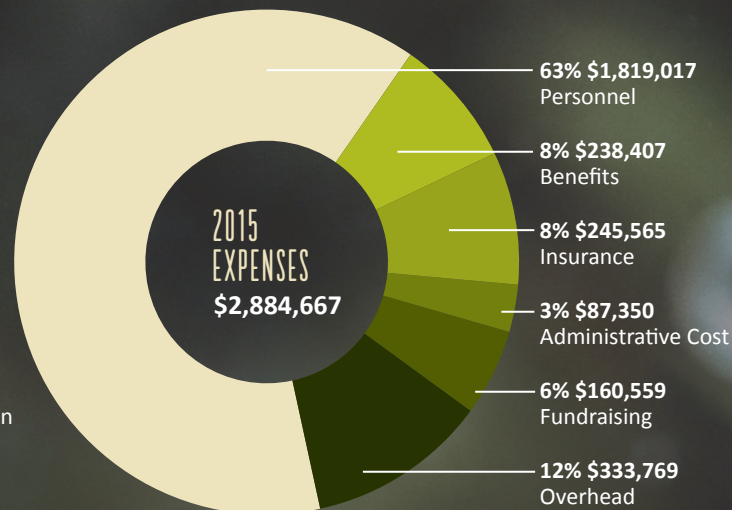
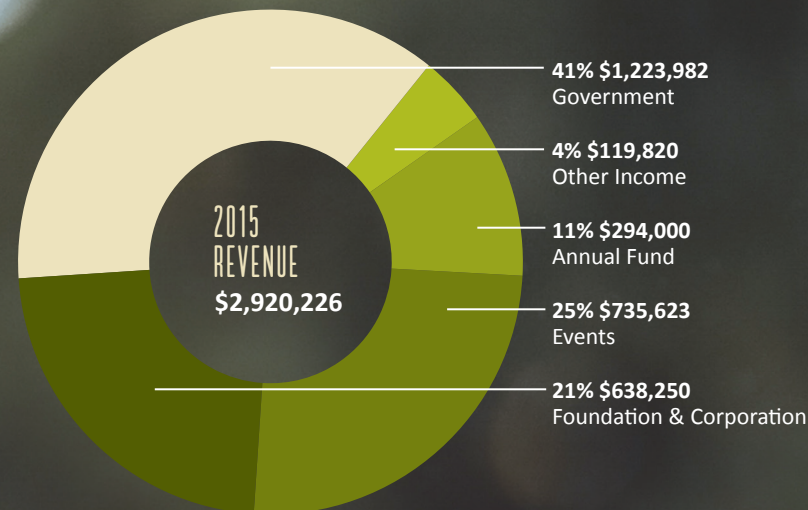
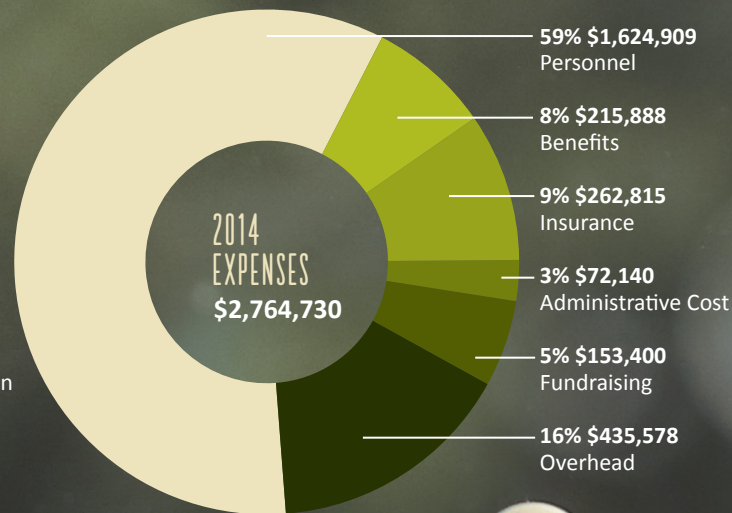
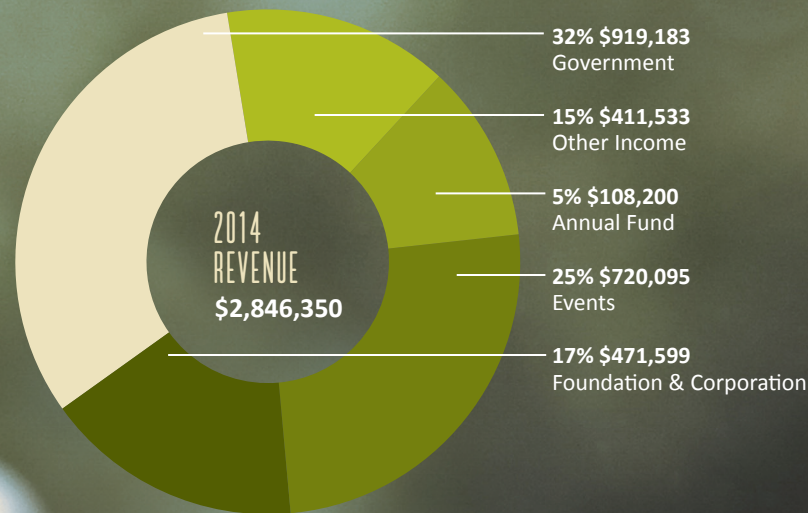


FINANCIALS

Support Center for Child Advocates is financially sound, closing the last two years "in the black." The majority of our annual budget revenue is comprised of the charitable contributions of individual and institutional donors.

In January 2015, Support Center for Child Advocates sold the building at 1900 Cherry Street that we have called home since 2002. The proceeds of the sale are being reserved for future occupancy costs and are not available for operations.

If you would like to review our audited financial statements, please visit advokid.org/resources/agency-financials/.



BOARD OF DIRECTORS

CURRENT BOARD MEMBERS*
DECEASED#

- Jeffrey Bagley***
Haverford Trust
- Deborah Baird***
Eckert Seamans
- Barbara Beckman***
Ballard Spahr
- Stephen Chawaga***
McElroy Deutsch Mulvaney & Carpenter
- Erica Cline***
Morgan, Lewis & Bockius
- Deborah Cohen***
Accolade
- Joe DeSimone***
Marcum
- Kathleen Egan***
Radian Guaranty
- Paul Finigan***
Continuum Rehabilitation
- Amy Fox***
RAF Industries, Inc
- Mark Gittelman***
PNC Bank
- Dena Goldberg***
- Dr. Heather Green***
Heather K. Green, LLC
- Feige Frundman**
Klasko Immigration Law Partners, LLP
- Beth Hanssens**
- M. Stroud Hellebusch***
Karr Barth Associates
- Rosemarie Hoslyn***
- Sherri Krensel***
Workplace Environments
- Scott Lempert***
Kessler Topaz Meltzer & Check, LLP
- Janie Mershon***
Lyons Dougherty
- Kathy Ochroch***
Blank Rome
- Edward Ohlbaum#**
Temple Beasley School of Law
- Charles Persing**
Bederson & Company

- Jill Porter**
 - Shannon Prown**
Navigant Consulting
 - Elizabeth Reeves**
AmeriHealth Caritas
 - James Robinson***
Gordon & Rees LLP
 - Jane Robinson***
UBS Financial Services
 - Suzanne Root**
Attorney at Law
 - Catherine Rothenberger***
Kolsby, Gordon, Robin, Shore & Bezar
 - Susan Rubinovitz***
Flaster Greenberg PC
 - Matthew Siegel**
Cozen O'Connor
 - Rand Siegel***
First Niagara Bank
 - David Silverman***
Curley, Hessinger & Johnsrud
 - Derek Squire***
Comcast Corporation
 - James Steigerwald***
Duane Morris
 - Nicole Friant Stewart**
Hunter Orchards
 - Kelley Tate***
Cummins Power Systems
 - Joe Tucker, Jr.**
Tucker Law Group
 - Dr. Ilene Wasserman***
ICW Consulting Group
 - Jennifer Welding***
Ellucian
 - Victoria Young**
ThotWave Technologies
- ## STAFF
- CURRENT STAFF MEMBERS*
- Lindsey Alexander***
 - Katherine Arend**
 - Laurie Aylor***
 - Cathy Behar***
 - Thomas Brown**

- Cashia Bryant***
- Tracy Buchholz***
- Frank Cervone***
- Tim Chambers***
- Xia Chen***
- Erin Coltrera***
- Pascalina Delmas**
- Thaddeus Desmond***
- Alexandra Dolan***
- Pamela Ende***
- Devon Ferguson***
- Catherine Galbally***
- Emily Goss***
- Marguerite Gualtieri***
- Jessica Hayden***
- Beth Herdmann**
- Meghan Johnson***
- Barry Kassel***
- Dr. M. Christine Kenty***
- Sandra Lavini***
- Martha Little***
- Naja Macon***
- Patricia McGettigan***
- Christine Minerva**
- Gina Morrison**
- Moir Mulroney***
- Chandra Palmer**
- Jan Platt***
- Milagros Roca***
- Megan Rok***
- Jodi Schatz***
- Chaneil Scott***
- Djuan Short***
- Sonja Smith***
- Megan Somsanith***
- Megan Stephens**

- Tracey Thomasey***
 - Briana Ventimiglia***
 - Gerald Weaber***
- ## LEADERSHIP COUNCIL
- CHAIR**
Honorable Jane Greenspan
JAMS
- MEMBERS**
Honorable Lynne Abraham
Archer & Greiner
- Dr. Steven Altschuler**
The Children's Hospital of Philadelphia
- Leonard Bernstein**
Reed Smith
- Sheldon Bonovitz**
Duane Morris
- Christopher Dunne**
Harvard School of Public Health
- Kenneth Frazier**
Merck & Co.
- Nancy Fullam**
The Fullam Firm
- Dr. Richard Gelles**
University of Pennsylvania School of Social Policy and Practice
- Lynne Honickman**
The Honickman Foundation
- Katayun Jaffari**
Partner, Ballard Spahr
- Ron Jaworski**
ESPN
- Leonard Klehr**
Lubert-Adler Partners
- Susanna Lachs**
- Leslie Anne Miller**
Leslie Anne Miller LLC
- Jim Murray**
Jim Murray Ltd.
- James Redeker**
Duane Morris LLP
- Honorable Michael Stiles**
Philadelphia Phillies

THANK YOU TO ALL OUR SUPPORTERS

WE ARE GRATEFUL FOR THE MANY KIND-HEARTED INDIVIDUALS, FOUNDATIONS, CORPORATIONS AND LAW FIRMS WHO SUPPORT OUR MISSION.

We take great care to ensure accuracy; however, mistakes can occur. Please report any discrepancies to Moira Mulrone, Director of Development & Communications, (267) 546-9208.

FY 2014 DONORS

(July 1, 2013 – June 30, 2014)

\$25,000-99,999

The Horace W. Goldsmith Foundation
The Pew Charitable Trusts
Philadelphia Bar Foundation
The Philadelphia Foundation
Stoneleigh Foundation
United Way of Greater Philadelphia and Southern New Jersey

\$10,000-24,999

1675 Foundation
The Abington Foundation
Altria
Anonymous
Ballard Spahr LLP
Blank Rome LLP
The Breaking Cycle Foundation
The Charter Foundation
Debbie & Rob Cohen
Cozen O'Connor
Dolfinger-McMahon Foundation
Duane Morris LLP
Fox Rothschild LLP
Andrea & Kenneth Frazier
The Fridolin Charitable Trust
Hess Foundation, Inc.
Independence Foundation
The Patricia Kind Family Foundation
Morgan, Lewis & Bockius LLP
OMG Center for Collaborative Learning
Pembroke North Condominium
Penn Consulting Group PC
Pepper Hamilton LLP
Phoenixville Community Health Foundation
Progressive Business Publications
Samuel S. Fels Fund
Cyma & Edward Satell
Harold & Adele Schaeffer and Innisfree Foundation
The E. Rhoda Shaten Charitable Foundation
Adrienne Simmons & Bradley Sheares and the Sheares Family Charitable Foundation
Paula & Mark Solomon

\$5,000-9,999

American Academy of Matrimonial Lawyers Foundation
AmeriHealth Caritas
Susan & Glenn Blumenfeld and Tactix Real Estate Advisors LLC
Sarah Bouchard
The Children's Hospital of Philadelphia Claneil Foundation, Inc.
Clayman Family Foundation
Rhonda & David Cohen and the Huron Foundation
Console Law Offices LLC
Drinker Biddle & Reath LLP
Eckert Seamans Cherin & Mellott LLC

Mindy & Thaddeus Fortin
Amy Fox & Daniel Wheeler
Penny & Bob Fox
Leah & Edward Frankel
Gibbons PC
Dena & Morey Goldberg and Rose Glen Advisors LLC
Carole Haas Gravagno & Emilio Gravagno and CHG Charitable Trust
Lynne & Harold Honickman and the Honickman Foundation
Alicia Horn & Joe Tucker and Tucker Law Group
Lisa Kabnick & John McFadden
KPMG LLP
Susan & Lawrence Levy
Liberty Property Trust
Lincoln Financial Foundation
McGuireWoods LLP
The Merck Foundation
Francis Milone
Elizabeth Moran
The Nelson Foundation
The November Fund
PECO Energy Company
Helen & Charles Persing
Philadelphia Real Estate Council
PNC Charitable Trusts
Post & Schell PC
Reilly, Janiczek & McDevitt PC
Suzanne Root
Alisa Field & Alan Sandals and Sandals & Associates PC
Saul Ewing LLP
Terri Decker & Adam Shapiro
SolomonEdwardsGroup LLC
Dana & Andrew Stone
Thomson Reuters
White and Williams LLP

\$2,500-4,999

Akin Gump Strauss Hauer & Feld LLP
Anapol Schwartz Weiss & Cohan
Aquipt, Inc.
Deborah Baird & James Ronca
Bartlit Beck Herman Palenchar & Scott LLP
BDO
Brandywine Realty Trust
Andrea & Louis Broad
Ciardi Ciardi & Astin
Clark Hill Thorp Reed
Cohen, Seglias, Pallas, Greenhall & Furman PC
Comcast Corporation
Connelly Foundation
Lisa Castleton & Stephen Console
Cummins Power Systems, Inc.
Dechert LLP
Joseph DeSimone
Mary Dickerson
Dilworth Paxson LLP
DLA Piper
Kathleen Egan

Glenn Evers
Patrick Farren
Feldman Shepherd Wohlgeleerner Tanner Weinstock Dodig LLP
Fesnak and Associates LLP
First Niagara Bank
Firsttrust
Pamela & W. Roderick Gagne
Lynne & Bill Garbose
The Genuardi Family Foundation
The George W. Rentschler Foundation
Gibson Dunn & Crutcher LLP
Mark Gittelman
The Glassman Family Foundation
Goldberg Kohn Foundation
Gordon & Rees LLP
Hangley Aronchick Segal Pudlin & Schiller
Beth & Christopher Hanssens
Annamarie & M. Stroud Hellebusch
Hoxie Harrison Smith Foundation
Mary Hugues
Independence Blue Cross
Katayun Jaffari and the Jaffari Family
James DeCrescenzo Reporting LLC
Susan Kressly & Gregory Anderson
Larry Pitt & Associates
Law Offices of Joseph DeRita LLC
Marcum LLP
Marshall Dennehey Warner Coleman & Goggin
Mayer Brown LLP
McFadden & Dillon
Jami McKeon & John Holloway
Alice & Michael Meehan
The Memton Fund, Inc.
Merck & Co., Inc.
Meridian Bank
Salli & Stephen Mickelberg
Dolores & Larry Miller and the Miller Family Foundation
Momjian Anderer LLC
Navigant Consulting, Inc.
Offit Kurman
Tecla Borick & Karl Okamoto
Panitch Schwarze Belisario & Nadel LLP
Philadelphia Bar Association
PricewaterhouseCoopers LLP
Ratner Prestia
Anne & James Galbally
Raynes McCarty
Jane & William Robinson
Amy Ginsky & Andrew Rogoff
Jodi Schatz & Dean Jerrehian and JadeYoga
Karyn Scher & Edward Ohlbaum*
Pam & Tony Schneider
Shechtman Marks Devor PC
Shook Hardy & Bacon LLP
Celestine & David Silverman
Stevens & Lee PC
Svartz Campbell LLC
USI Affinity
Valley Forge Consulting Group, Inc.
Wawa, Inc. Corporate Charity

Weinstock Friedman & Friedman PA
Workplace Environments
Zarwin Baum DeVito Kaplan Schaar & Toddy PC

\$1,000-2,499

Hon. Lynne Abraham
AIG
Barbara & Todd Albert
The Andrea Cavitolo Foundation
Arronson Foundation
Mary & Jeffrey Bagley
Rochelle & Lawrence Beaser
The Beneficial Charitable Foundation
Benesch Friedlander Coplan & Aronoff LLP
Ellan & Leonard Bernstein
Beveridge & Diamond PC
Harris Bock
Christopher Boyle
Sarah Bricknell
Caddick Construction Co., Inc.
Carlton Fields
Caron Treatment Centers
Kimberly & Bart Cassidy
Center City Film & Video
Cynthia Certo & Marcelo Parravicini
Joseph Cianfrani
Louis Cinquante
Erica Cline & Mitchell Reading
Suzanne & Norman Cohn
Conestoga Bank
Kevin Console
Donna Corrato
Susan Charleston & Kenneth Davis
Theresa Davis
J. Michael Debbeler
Delaware County Community Foundation
The Dispute Resolution Institute
Joan & Michael Emmi
Enterprise Holdings Foundation
Tamsin & Scott Fast
Agnes & Paul Finigan
Firsttrust Bank
Ann & Richard Flannery
Flaster Greenberg, PC
Paulette & Lawrence Fox
Nicole Friant & David Stewart
Frick Family Fund
Anne & James Galbally
Phyllis Rubin & Alan Garfield
The Gebhard Wealth Management Group
of Janney Montgomery Scott
Daniel Geffken
Norma & Bernard Gittelman
Janis & Stephen Goodman
Marie & Kenneth Gould
Rosemarie Greco & Anne Morrissey
Hon. Jane & Allan Greenspan
The Haverford Trust Company
Heckscher, Teillon, Terrill, & Sager PC
Heritage Senior Living LLC
The Herman & Jerry Finkelstein Foundation
Rachel & Ara Hovnanian

I.L. Cohen Foundation
IKE Capital LLC
Jewish Federation of Greater Philadelphia
Frieda Aboyoum & Herbert Kanarick

Debra Markowitz & David Kaplan
Margot & Robert Keith
Katherine Kelton & Troy Graham
Marshall King
Lynda Weaver & Ronald Kovler
Jill & Paul Lauricella
Law Offices of Katherine L. Niven & Associates
LevLane
Louis N. Cassett Foundation
MainLine Private Wealth LLC
Maron Marvel Bradley & Anderson LLC
The Martin Foundation
Maxwell Strawbridge Charitable Trust
McCarter & English LLP
Raymond McCullough
Maureen Tate & Hon. Gerald McHugh
Laura & Marc McKenna
The McKenna Long & Aldridge Foundation
William McNichol
Judith & Marshall Meyer
Anna & Christopher Mikson
Maida Milone
Montgomery, McCracken, Walker & Rhoads LLP
Morgan & Pottinger PSC
Michele & Kieran Mulrone
Meta & Benjamin Neilson
New Vitae, Inc.
Kathy Ochroch & Peter Hilton-Kingdon
Penn-Del-Jersey Chapter of NECA
Philadelphia Eagles LLC
Alecia & David Pittinsky
PNC Financial Services Group
Lindsey & Lawrence Pockers
Public Citizens for Children and Youth
Radian Group, Inc.
Reed Smith LLP
Elizabeth & James Reeves
Ricoh USA, Inc.
James Robinson
Marcia & Ronald Rubin
Susan & Paul Saint-Antoine
Saltz Mongeluzzi Barrett & Bendesky PC
Pauline Scalvino
Schnader Harrison Segal & Lewis LLP
Seed the Dream Foundation
Segal McCambridge Singer & Mahoney LTD
Barbara & Herbert Shear
Christine Shubert
Shutts & Bowen LLP
The Sidley Austin Foundation
Matthew Siegel
Barbara Sivan
Gina & Gary Smith
SMR Legal Search
Cassie Solomon & Benjamin Pierce
Emilie & James Steigerwald
Mary Gay Scanlon & Mark Stewart
Diane & John Sullivan
Bernadette & Joseph Tate
Thompson Coburn, LLP
TIFF Advisory Services
Eric Tilles
UBS Financial Services, Inc.
Melinda Van Nimwegen
Veritext
Westrum Development Company
Deborah & Andrew Whitney

\$500-999

Abelson Legal Search
Lori & Michael Banks
Marla & Joseph Battipaglia
Berner Klaw & Watson LLP

Risa Boerner
Anna Boni
Jill & Sheldon Bonovitz
Tyler Bowman
Mary Bradley & Mary Louise Cervone*
Jennifer & Gary Bragg
Patricia Brooks
Mary & James Brown
Jacquelyn Caridad
Neal Colton
Concentus Wealth Advisors
Mary & James Conlan
Mary & Anthony Creamer
Nancy & Francis Crowley
Phillip Daman
De Lage Landen Financial Services
Candy & Thomas Decker
Delaware Valley Chapter of the Association of Corporate Counsel
Missy & Rudolph Di Massa
Tamra & John Dodds
Brian Donadio
Dynamic Reporting
Kristin & Scott Edwards
Eisenberg, Rothweiler, Winkler, Eisenberg & Jeck PC
Jennifer Eppensteiner
EWA Government Systems, Inc.
Falcon Capital Partners LLC
Shannon & Edward Farmer
Jacqueline Farrell-Mulholland & Terrance Mulholland
Debra Fickler & Steve Russell
Ann Field
Anthony Gallia
Gibbons PC
Nancy Glace
Goldberg Miller & Rubin PC
Golomb & Honik PC
Sean Gonick
Jeannine & Al Gray
Heather Green
Feige Grundman
Monica Hanover
Kenneth Harris
Katherine Hatton & Richard Bilotti
Marretta & Fred Henretig
Anne & David Hilton
Michael Homans
Elizabeth & Gordon Hughes
Soodabeh Jaffari-Pasierb & Mark Pasierb
Matthew Jones
Barry Kahan
Susan & Geoffrey Kahn
Jill & Elliot Kaplan
Katherine & Kirk Katchen
The Katz Family Charitable Trust
Jacqueline Keenan
Susan Kline Klehr & Leonard Klehr
Mary & Justin Klein
Kline & Specter PC
Barry Koh
Paul Lally
LANsultants
Timothy Law
Joan & Thomas Leonard
Littler Mendelson PC
Elizabeth Malloy
Manko, Gold, Katcher & Fox LLP
Cheryl Martin
Martin LLC
Susan & Darryl May
Bonnie & Peter McCausland
Peter McNamara
Janie & John Mershon
Barbara & Howard Meyers
Cynthia Micka
Emily & Lawrence Miller
Leslie Miller & Richard Worley

Kevin Montague
Ellen & Michael Mulrone
Moira Mulrone & Christopher Hatch
Kimberly & Joshua Myers
New Century Trust
Obermayer Rebmann Maxwell & Hippel LLP
Anne Gallagher & Richard O'Malley
Kimberly & Carl Oxholm
Pine Street Studios, Inc.
Maureen & Samuel Pond
Jill Porter & Fred Hamilton
Paul Quinones
Sherri & Abraham Reich
Adam Rifkind
Theresa & John Rollins
Carol Rosenthal
RT Environmental Services, Inc.
Samuel D. Cozen Memorial Fund
Samuel P. Mandell Foundation
Patricia Santelle
Amy & Steve Schuh
Michael Scott
Diana & Robert Scott
Stefanie & Alex Seldin
Abby Sher
Shira & Stuart Sklar
John Sperger
St. Peter's Episcopal Church
Steve Harvey Law LLC
Anne & Richard Umbrecht
Natasha Van der Griendt
& Terrance Varghese
Angela Verrecchio
Nicholas Verrecchio
Laurie Wagman & Irv Borowsky*
Nancy Walker
Mary Walrath & Edward Toole
Wapner, Newman, Wigrizer, Brecher & Miller PC
Willig, Williams & Davidson
Etta & Allen Winograd
Ann & Neil Witkes
Darla Woodring
Donna & Mark Wren
Amanda Young
Joan Yue
Jacqueline & Thomas Zemaitis

FY 2015 DONORS

(July 1, 2014 – June 30, 2015)

\$100,000+

City of Philadelphia
Commonwealth of Pennsylvania
The Horace W. Goldsmith Foundation

\$25,000-99,999

The Breaking the Cycle Foundation
Connelly Foundation
First Hospital Foundation
Andrea & Kenneth Frazier
Merck & Co., Inc.
PA IOLTA
Pennsylvania Commission on Crime & Delinquency
The Pew Charitable Trusts
Philadelphia Bar Foundation
The Philadelphia Foundation
Susan & Glenn Blumenfeld and Tactix Real Estate Advisors LLC
United Way of Greater Philadelphia and Southern New Jersey

\$10,000-24,999

1675 Foundation
The Abington Foundation
Altria
Ballard Spahr LLP

Blank Rome LLP
Clayman Family Foundation
Deborah & Robert Cohen
Cozen O'Connor
Dolfinger-McMahon Foundation
Duane Morris LLP
Equal Measure
Samuel S. Fels Fund
Fox Rothschild LLP
Penny & Robert Fox
The Fridolin Charitable Trust
Hess Foundation, Inc.
Independence Foundation
The Patricia Kind Family Foundation
Lenfest Group LLC
Lincoln Financial Foundation
The McLean Contributionship
Morgan, Lewis & Bockius LLP
The November Fund
Pepper Hamilton LLP
Phoenixville Community Health Foundation
The E. Rhoda Shaten Charitable Foundation
Adrienne Simmons & Bradley Sheares and the Sheares Family Foundation
Paula & Mark Solomon

\$5,000-9,999

American Academy of Matrimonial Lawyers Foundation
AmeriHealth Caritas
Deborah Baird & James Ronca
Buchanan Ingersoll & Rooney PC
Butler Snow LLP
Sheila & Edward Chacker
The Children's Hospital of Philadelphia
Christian R. and Mary F. Lindback Foundation
I.L. Cohen Foundation
Console Law Offices LLC
Terri Decker & Adam Shapiro
Dilworth Paxson LLP
Drinker Biddle & Reath LLP
Ellen & Matthew Duncan
Eckert Seamans Cherin & Mellott LLC
Firsttrust Bank
Mindy & Thaddeus Fortin
Amy Fox & Daniel Wheeler
Gibbons PC
Marci & Richard Golomb
Carole Haas Gravagno & Emilio Gravagno and CHG Charitable Trust
Hogan Lovells US LLP
Lynn & Harold Honickman and the Honickman Foundation
Hoxie Harrison Smith Foundation
The Thomas Skelton Harrison Foundation
The Huron Foundation
Lisa Kabnick & John McFadden
KPMG LLP
Susan & Lawrence Levy
Liberty Property Trust
Marcum LLP
McCarter & English LLP
Dolores & Larry Miller and the Miller Family Foundation
The Nelson Foundation
PECO Energy Company
Penn Consulting Group PC
Estate of Andrejs Perkons
Reed Smith LLP
Reilly, Janiczek, McDevitt, Henrich & Cholden PC
Jane & William Robinson
Suzanne Root
Saul Ewing LLP
Pam & Tony Schneider
SolomonEdwardsGroup LLC
The Spruce Foundation
Dana & Andrew Stone

Paul Strain
Thomson Reuters
Douglas Treco
Alicia Horn & Joe Tucker and Tucker Law Group
Turning Points for Children
Venable LLP
White and Williams LLP

\$2,500-4,999

Akin Gump Strauss Hauer & Feld LLP
Anapol Schwartz
Joycellen Auritt & Les Schlessinger
Baker & Hostetler LLP
Bartlit Beck Herman Palenchar & Scott LLP
Tecla Borick & Karl Okamoto
Mary Bradley
Louis N. Cassett Foundation
Clark Hill
Cohen Seglias Pallas Greenhall & Furman PC
Cummins Power Systems LLC
DLA Piper
Keith Duzenski
Feldman Shepherd Wohlgelernter Tanner Weinstock Dodig LLP
Fineman Krekstein & Harris PC
Agnes & Paul Finigan
First Niagara Bank
Virginia Gibson & Lawrence Kutys
The Glassman Family Foundation
Dena & Morey Goldberg and Rose Glen Advisors LLC
Hangley Aronchick Segal Pudlin & Schiller
The Haverford Trust Company
Annamarie & M. Stroud Hellebusch
Karen & Peter Hoffman
IKE Capital LLC
Independence Blue Cross
Katayun Jaffari and the Jaffari Family
Edward Jones
Susan Kressly & Gregory Anderson
Susanna Lachs & Dean Adler
Jill & Paul Lauricella
Margolis Edelstein
Marshall Dennehey Warner Coleman & Goggin
Mayer Brown LLP
McFadden & Dillon
McGladrey LLP
Alice & Michael Meehan
MillCrest Law LLP
Montgomery McCracken
Kathy Ochroch & Peter Hilton-Kingdon
Permit Capital Advisors
Helen & Charles Persing
Philadelphia Bar Association
Philadelphia Real Estate Council
Rawle & Henderson LLP
The George W. Rentschler Foundation
Republic Bank
Sandals & Associates PC
Jodi Schatz & Dean Jerrehian and JadeYoga
Karyn Scher
Shook Hardy & Bacon LLP
The Sidley Austin Foundation
Stevens & Lee PC
Swartz Campbell LLC
UBS Financial Services, Inc.
USI Affinity
Veritext Legal Solutions
Wawa, Inc.
Weinstock Friedman & Friedman PA
William Penn Foundation
Workplace Environments

\$1,000-2,499

Ricardo Aguilar
AIG
The Allstate Foundation
Arronson Foundation
Mary & Jeffrey Bagley
Lori & Michael Banks
Rochelle & Lawrence Beaser
Beneficial Foundation
Beveridge & Diamond PC
Jill & Sheldon Bonovitz
Sarah Bricknell
Andrea & Louis Broad
Patricia Brooks
Richard Brown, Jr.
Lauren Carella
Kimberly & Bart Cassidy
Susan Charleston & Kenneth Davis
Ciardi Ciardi & Astin
Erica Cline & Mitchell Reading
Patrick Coyne
Curley, Hessinger & Johnsrud LLP
Delaware County Community Foundation
Joseph DeSimone
Missy & Rudolph Di Massa
The Dispute Resolution Institute
Gerald Donlan
Kathleen Egan
Enterprise Holdings Foundation
Farber Family Foundation
Shannon & Edward Farmer
Tamsin & Scott Fast
Alvin Fields
Marjorie Stein & Larry Fine
The Herman and Jerry Finkelstein Foundation
Barbara Beckman & Joseph Flanagan
Ann & Richard Flannery
Flaster Greenberg PC
Paulette & Lawrence Fox
Nicole Friant & David Stewart
Pamela & W. Roderick Gagne
Anne Gallagher & Richard O'Malley
Lynne & Bill Garbose
Gateway Funding
Daniel Geffken
Patricia Gellman
Kathy & Richard Geschke
Marie & Kenneth Gould
Jane & Allan Greenspan
The H Foundation
Katie Hannigan
Monica & Edward Hanover
Michael Hartung
Health Partners Foundation
Heritage Senior Living LLC
Hill Wallack LLP
Elizabeth & Gordon Hughes
The Hurlburt Foundation
International Brotherhood of Electrical Workers
Jefferson University Hospital
Wendy Klein Keane & Justin Keane
Katherine Kelton & Troy Graham
Klasko Immigration Law Partners LLP
Ronald Kovler
Langsam Stevens Silver & Hollaender LLP
Charisse Lillie & Thomas McGill
Joe Luccaro
Mace's Crossing
Debra Markowitz & David Kaplan
Marks, O'Neill, O'Brien, Doherty & Kelly PC
The Martin Foundation
Laura & John Mattiacci
Lawrence McAlee
Martha & Timothy McCann
McCausland & McCausland LLC
William McNichol, Jr.
Jami McKeon & John Holloway

Janie & John Mershon
The Judith and Marshall Meyer Foundation, Inc.
MFR Consultants, Inc.
Ania & Christopher Mikson
Leslie Miller & Richard Worley
Francis Milone
Maida Milone
Meta & Benjamin Neilson
Theresa Morris & Charles Freeman
Offit Kurman
Penn-Del-Jersey Chapter of NECA
Pennsylvania Osteopathic Medical Association
Pennsylvania Real Estate Investment Trust
Philadelphia Association of Defense Counsel
Philadelphia Eagles LLC
The Pine Hill Group
PNC Financial Services Group
Lindsey & Lawrence Pockers
Post & Schell PC
Radian Group, Inc.
Raynes McCarty
Sherri & Abraham Reich
Ricoh USA, Inc.
Jennifer & Walter Robinson
Anne & John Rogers
Catherine Rothenberger
Susan Rubinovitz
Karen & Ben Sanchez
Cyma & Edward Satell
Seed the Dream Foundation
Toni Seidl & Richard Berkman
Mitchell Shore
Jill & Elliot Kaplan
Barbara Sivan
Melissa & Derek Squire
Emilie & James Steigerwald
Joan Stern
Joy Tartar & George Hall
Bernadette & Joseph Tate
Maureen Tate & Gerald McHugh
TIFF Advisory Services
Eric Tilles
Trenk DiPasquale Della Fera & Sodono PC
University City Housing Company
Wapner, Newman, Wigrizer, Brecher & Miller PC
Ilene Wasserman & Mark Taylor
Jennifer Welding
Westrum Development Company
Willig, Williams & Davidson
Elizabeth Wixted
Mehreen Zaman
Zarwin Baum DeVito Kaplan Schaar & Toddy PC

\$500-999

Abelson Legal Search
ACE Charitable Foundation
American Board of Internal Medicine
Susan Ascher & Paul Kalb
Eileen & Richard Bazelon
Barbara & Robert Behar
Daniel Berman
Berner Klaw & Watson LLP
Phyllis & Gabriel Bevilacqua
Candice Calabro & Carl Luccaro
Jacquelyn Caridad
Elizabeth Tabas Carson
The Andrea Cavitolo Foundation
Abbi Cohen & Thomas O'Connell
Mary & James Conlan
Marion Cowell
Candy & Thomas Decker
De Lage Landen Financial Services
Elizabeth & John Delaney
Delaware Valley Chapter of the Assoc. of Corporate Counsel

James Doherty Family Charitable Fund
Brian Donadio
Duffy + Partners
Genny & Christopher Dunne
Jeanne Dworetzky
Eisenberg, Rothweiler, Winkler, Eisenberg & Jeck PC
Stewart Eisenberg
Andrea & Mark Eisold
Environetics
Rochelle & William Fedullo
Debra Fickler & Steve Russell
Ann Field
Christina & Gary Fink
Geraldine & Richard Fox
Christine & Mark Gaeto
Harry Giacometti
Katherine Giordano
Mark Gittelman
Nancy Glace
Glanzmann Subaru
Angelina & James Grasty
Heather & Brenner Green
Feige Grundman & Dustin Leyland
Sandy & Rayford Guild
Jill Porter & Fred Hamilton
Beth & Christopher Hanssens
Jennifer Harmon
Kenneth Harris
Katherine Hovde & Kenneth Kulak
Renee Hughes
Nadia & Stephen Jannetta
Jackie & Aram Jerrehian
Susan & Geoffrey Kahn
Jill & Elliot Kaplan
Fran & Steven Katz
Farhad Khan
Mary & Justin Klein
Rita & Lawrence Kotler
Sherri & Ernest Krensel
Anne & David Larsson
Kenneth Leichter
Laurence Liss
Littler Mendelson PC
A. Kristina & M. Jared Littman
Patricia Lynch & Gerald Weaver
Maron Marvel Bradley & Anderson LLC
Martin Law
Cheryl Martin
Maxwell Strawbridge Charitable Trust
Susan & Darryl May
The McCausland Foundation
Raymond McCullough
Elisa & William McEnroe
Kathleen Meriwether & Thomas Mahoney
Ann Micka
John Moerman
Tharita & Dermot Mulrone
Ellen & Michael Mulrone
Moira Mulrone & Chris Hatch
Kimberly & Joshua Myers
David Newmann
James Nicolo
Laura Novo & Stephen Chawaga
Kaitlin Oberst
Kimberly & Michael Olson
Pansini Law Group
Kelliann Payne
Alecia & David Pittinsky
Public Health Management Corporation
Elizabeth & Spencer Rand
Subha & James Robinson
RT Environmental Services, Inc.
Susan & Paul Saint-Antoine
Mary Gay Scanlon & Mark Stewart
Diana & Robert Scott
Stefanie & Alex Seldin
Rose & Rand Siegel
Celestine & David Silverman

Phyllis Simon & David Abernethy
Marc Sonnenfeld
John Sperger
Heather Steinmiller
Stradley Ronon Stevens & Young LLP
Eileen Talanian & Michael Duffy
Eileen Talanian
Robert Tintner
Valley Forge Consulting Group, Inc.
Carol & John VanLuvanee
Nancy Walker
William Wallander
Megan & Chris Watson
Weir & Partners LLP
Joanne & Raymond Welsh
Thomas Wilkinson
Ann & Neil Witkes
Patricia & John Wixted
Joan Yue

\$250-499

Coleen Abbott
Donna Adelsberger
Lindsey Alexander
Judith Algeo & Frank Cervone
Wendi Alper-Pressman
Asterion, Inc.
Gail Greenspon & Ross Attix
Mary & Evan Avgerinos
Mitchell Bach
Badey, Sloan & DiGenova
Sean Bakst
Neil Batiancila
Lois & Matthew Blum
Cheryl Bowden & Steven Johnson
Tyler Bowman
Maggi Boyer
Christopher Boyle
Martin Brigham
Jessica Brookstein
Gardenia Brooman
Theodore Caldwell
Kathyanne Cohen
Community Legal Services
Catherine Conway
Linda & Douglas Coopersmith
Christopher Cordasco
Laura Corsell
Mary & Anthony Creamer
Nina Cummings & Allan Tannenbaum
Charles Cunningham
Marti & John Cunningham
Susan Danielski
Susan Davis
Thaddeus Desmond
Anne & Robert Diehl
Brian Rhoades
Tamra & John Dodds
Susan Dornstein & Gary Deutsch
Caroline & Robert Ebby
William Edwards, III
Nancy & Thomas Eshelman
eXude Benefits Group
Feldman & Feldman LLP
Barbara & John Forer
Rick Freeth
Karl Fritton
Nancy Fox & Jon Edwards
Susannah & Stephen Friedman
John Gaul
Eileen Giardino
Harry Glover
Goldberg Miller & Rubin PC
Leslie Gomez & Richard Sax
Rodney Green
Kathleen & Francis Hadden
Robert Half International
Randi & John Harris
Katherine & R. Radcliffe Hastings

Sharon Helms
Marretta & Fred Henretig
Gail & David Hofstein
Michael Homans
Alycia Horn
Mary Hugues
Donald Hurford
Susan Israel
Barbara & Charles Kahn
Lisa Kahn
Katherine & Kirk Katchen
Harriet Katz
M. Christine Kenty & James Walters
Susan Kline Klehr & Leonard Klehr
Alan Klein
Kline & Specter PC
Michele Klucar
Catherine & J. Michael Kunsch
Michael Kuritzkes
Marlene Lachman & Alan Ominsky
Jason LaRocco
Joan & Thomas Leonard
Judy & Peter Leone
Jan Levine & M. Michael Zuckerman
David Little

Arlene & S. Gerald Litvin
Law Office of Michael LiPuma
Melissa Long & Edward Rogers
Lopez McHugh LLP
Ira Lubert
Sarah & Daniel Luccaro
Charles Lunden
Mason Luxion
Licia & Matthew Marrone
Starr Marshall-Cash
Stella Tsai & Paul McCarthy
Janice McGinn
Maureen McGinty
Martina McLaughlin
Jenna McNeill
Sallie Melchiorre
Robert Miller
Sheri Minnick & J. Bradley Fewell
Barbara & Jeremy Mishkin
Rosanne Mistretta & Steven Miano
Linda Montemayor
Mary & Robert Mulhern
Multicultural Wellness Center
Suzanne & Ronald Naples
John O'Brien
Margaret O'Neill
Leslie Pearlman
Pelas Corporation
People's Emergency Center
Shannon & Peter Prown
Stephanie Resnick
Brian Rhoades
Jessica Rickabaugh & Brian Oefinger
Adam Rifkind
Lesley & Ralph Rodak
Carton Rogers
Andrew Rolfes
Theresa & John Rollins
Rona Rosen & Mark Cohen
Mitchell Russell
Saltz Mongeluzzi Barrett & Bendesky PC
Madeleine Sann & Richard Birns
Patricia Santelle
Mary & Stephen Scherf
Amy & Stephen Schuh
Robert Schwartz
Jennifer Seme
Sheller Family Foundation
William Shelley
Matthew Siegel
Miriam & Arthur Siegel
Barbara & Marc Silbert
Dea Silbertrust & Wayne Welsh
Silver Springs - Martin Luther School

Arnold Singer
Hazel Smith
Ward Smith
Margaret Sofio
Soloff & Zervanos PC
Mary Teresa Soltis
Sharon Sood & Scott Lempert
Amy Stone & Lawrence Tingley
Keith Stroup
Marianne Styles
Eve & Francis Swiacki
Kathleen & William Taylor
Technical Advisory Service for Attorneys
Eleanor Thompson
Truist
Judy Turetsky & F. Scott Beadenkopf
Ken Varallo
Laura Vendzules & W. Raymond Owens
William Ward
Sarah & Adam Weinstein
Deborah & Andrew Whitney
Elizabeth Wideman
Nancy & David Winkler
Jacqueline & Thomas Zemaitis

IN-KIND DONATIONS

AFC Fitness
Judith Algeo & Frank Cervone
Gerry Allen
Atlantis Paradise Islands
Auto Dealers Caring for Kids Foundation
Dr. Deborah Backiel
Jeffrey Bagley
Ballard Spahr LLP
Bederson & Company LLP
Blank Rome LLP
Dave Boyer
Brandywine Realty Company
David Callan
Cesar Rivise
Clear Channel
Neal Colton
Commonwealth National Golf Club
Comcast NBC
Margaret & Bob Cort
David Silverman
Nancy Dunleavy
Dunkin Donuts
Ronald Fisher
Four Seasons Hotel
Penny Fox
Kathy Gerrow
Hawk Opportunity Fund
Lynne & Harold Honickman
Lisa Kabnick & John McFadden
KDI Office Technology
K'Nex
Ron Kovler
Kramer Masterpiece Portrait
Sherri & Ernie Krensel
Craig LaBan
Deborah Leavy
Legal Intelligencer
LevLane
Lindt Chocolate
The Lodge at Woodloch
Mandalay Bay
John Mastronado
Janie Mershon
Rosanne Mistretta & Steven Miano
Mitchell Gold + Bob Williams
Theresa Morris & Charles Freeman
Katherine Niven
John Pavain & Max Q Technologies
Pebblebrook Hotel Trust
Philadelphia Eagles
Philadelphia Flyers
Philadelphia Phillies

Philadelphia Runner
Julie & Marc Platt
Steve Poses
Preferred Car and Limousine LLC
Merrill Reese
Reliable
Hon. Edward Rendell
The Ritz-Carlton
Riviera Maya
Suzanne Root
Ed & Cyma Satell
SBS
Alice Schwartz & Mario Pisaneschi
Pattie Sellers
Seligsohn Soens Hess
Shmaltz Brewing Company
Judy Simon
Paula & Mark Solomon
Sprout
Steen Advertising
Janet & Sy Stotland
Sunset World
Sunoco
Universal Studios
Wawa
WHYY
Etta Winigrad
Woodloch Pines Resort
Workplace Environment
WXPX
Yards Brewing Company

2013-2015 VOLUNTEER ATTORNEYS

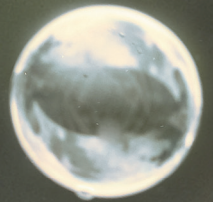
Anne Aaronson
Esuga Abaya
Kristie Abel
David Abernethy
Allan Aclo
Donna Adelsberger
Michael Adler
Leen Al-Alami
Shreya Amin
Shannon Ammon
Jennifer Anderson
Joseph Arnold
Brian Auerbach
Deborah Baird
Joseph Baldassari
Ned Barlas
Jeanne Barnum
Joseph Battipaglia
Heather Baum
Jennifer Bazydio
Lily Becker
Ryan Becker
Barbara Beckman
Saul Behar
Carey Bell
Amy Berger
Jenna Berman
Jenna Berman
Edward Bigham
Lawrence Bistany
Frederick Blakelock
Susan Blumenfeld
Robert Boote
Ryan Borneman
Christopher Bradley
Rachel Branson
William Braveman
Lauren Brill
Michael Broadhurst
E. Taylor Brody
Kelly Brogan
Angela Brosnan
Allison Brown
Jessie Bryan
Michael Burkhardt

Christiane Campbell
Marissa Capizzi
Gregory Capps
Lauren Carella
Jacquelyn Caridad
Michelle Carson
Starr Cash
Candace Centeno
Cynthia Certo
Catherine Chan
M. Charles-Asar
Stephen Chawaga
Virginia Chentis-Stevens
Katharyn Christian McGee
Meghan Claiborne
Lauren Clark
Erica Cline
J. Cloak
Deborah Cohen
Andrew Cohen
Bess Collier
Rachel Collins
Tracy Combs
Marla Conley
Michelle Conner
Robert Connor
Samantha Conway
Franco Corrado
Jennifer Cranston
Joseph Cronin
Francis Crowley
Mary Cunnane
Beth Cutler
Lorie Dakessian
Heidi Dallas
Donna Daly
Jeffrey Daman
Sarah Davies
Kenneth Davis
Carrie Davis
Zara Davis
Cary Davis-Leizerowski
Pedro de la Torre
Walter De Treux
Michele Dean
Allison DeLaurentis
Mattie DeLaurentis
Deborah DeLauro
V.P. DePillis
Jerry DeSiderato
Gary Deutsch
Mindy Dickinson
William Dienna
Joel Dion
Catherine DiValentino
Juliette Dobson
Janet Doherty
John Donovan
Eileen Dooley
Sonya Dore
Matthew Duncan
Desinee Dwyer
David Dzara
Robert Ebby
Lori Emrick
Jennifer Eppensteiner
Katherine Etherington
Deborah Evans
Christopher Ezold
Heather Faltn
Shannon Farmer
Rachel Farr
Joshua Ferguson
Shaune Ferrara
Andrew Fisher
Charles Fitzpatrick
Gina Florez
Regina Foley
Jordan Fox
A. Nicole Friant
Karl Fritton
Tara Frohner
Nancy Fullam
Alfred Fuscaldo
Meredith Galto
Danielle Gardner
John Gaul

Scott Gessner
James Giles
Marcia Glickman
Robyn Goldenberg
Leslie Gomez
Gayle Gowen
Leslie Greenspan
Courtney Griffin
James Griffith
Feige Grundman
Amy Guerin
Matthew Gutt
James Hadden
Kristin Hadgis
Erin Hanlon
Heather Hansen
Matthew Hartman
Sandra Hashima
John Hayburn
Elizabeth Hecht
Martin Heckscher
Charles Hehmeyer
Susan Herron
Meghan Higgins
Christa High
Joshua Hill
Christopher Hinderliter
M. Suzanne Hodges
Michael Homans
Rosemarie Hoslyn
Sarah Humble
Alisa Huth
William Igoe
Lisa Isaacs
Katherine Isard
Jodi Isenberg
Samuel Israel
Katayun Jaffari
Jaime Jano
Walter Jenkins
Suzanne Jones
Jennifer Jordan
Keith Joseph
Scott Kahn
Lev Kalman
Jodi Kalson
Anne Kane
Stephanie Kaplan
Eric Kassab
Katherine Katchen
Leah Katz
Sarah Kaufman
Mark Kehoe
Heather Kelly
Jane Kim
Yunhee Kim
Patricia Kipnis
Kate Kleba
Matthew Klebanoff
Andrew Klein
Wendy Klein Keane
Julie Kligerman
Melissa Knoerzer
Stephanie Kosta
Viktoria Kristiansson
Christina Kubiak
Angelique Kuchta
Carey Kulp
Jill Kuntz
Michael Kuritzkes
Brad Kushner
Gregory Lare
Conor Larkin
Jason LaRocco
Jennifer LaTour
Monica Lawrence
Scott Lempert
Natalie Lesser
Danielle Letting
David Levenberg
Murray Levin
Jan Levine
Ayana Lewis
Lindsay Liebman
Diana Lin
Kristen Little
A. Kristina Littman

Andrea Lockenour
Brian London
Isla Long
Daniel Luccaro
Denise Lynch
Nicole Mabengeza
Gina MacNeill
Kimberly Magrini
Rachel Mandell
Anne Manero
Jennifer Mannion
Derek Marks
Stuart Maron
James Martin
Steven Maslowski
Jaclyn Mason
Carol McCabe
Patricia McCausland
Raymond McCullough
Elisa McEnroe
Todd McGarvey
Edward McGinn
Maureen McGinty
Paul McGurkin
Caitlin McKenna
Jamie McMahan
Sandra McManus
Peter McNamara
Karen McWilliams
Vincent Melchiorre
Melanie Silverstein
Christopher Mikson
Tyesha Miley
Justin Mixon
Douglas Moak
Ria Momblanco
Daniel Monahan
Peter Mooney
John Mueller
Julie Murphy
Eileen Murphy
Noor Najeeb
Christine Nassauer
Amy Neher
Regina Nelson
Claire Newman
Jessie Nibley
James Nicolo
Suzanne Noyes
Oleg Nudelman
Olufeyikemi Obafemi
Caitlin Oberst
John O'Brien
Bobby Ochoa
Kathy Ochroch
John O'Donnell
Kenny Oh
Edward Ohlbaum
Meredith Olearchik
Michael Olsan
Margaret O'Neill
Barri Orlow
Corey Osborn
Donna Ostroff
Armand Pace
Margaret Padilla
Calli Padilla
Reena Parambath
Justin Park
Andrea Parry
Yarmela Pavlovic
Christopher Petillo
Joyce Petrenchak
Wayne Pinkstone
Anita Pitock
Monica Platt
Gerard Plourde
Lawrence Pockers
Karen Pohlmann
Lisa Port
Carol Press
Lisa Prince
Lisa Prince
Jessica Priselac
Diana Rabeh
Randi Rabinowitz
Catherine Raymond

Brett Regan
Chauvron Regis
Nicole Reimann
Meaghan Reim-Strange
Mark Rhoades
Mark Rhoades
James Richards
Jessica Rickabaugh
Adam Rifkind
Carl Roberts
James Robinson
Margaret Rodgers Schmidt
Andrew Rolfes
James Root
Julie Rose
Carrie Rosen
Catherine Rothenberger
Lisa Salazar
Karen Sanchez
Atarah Savage
Brian Scanlon
Meredith Schalick
Caren Schifman
Sarah Schlossberg
H. Lee Schwartzberg
Katherine Scrivner
Mark Seiberling
Jennifer Seme
Aimee Sherrock
Matthew Siegel
Melanie Silverstein
Mackenzie Smith
Lauren Smith
Michelle Smith
Michael Solomon
Eileen Somers
Tiffany Southerland
Megan Spitz
Judy Springer
Derek Squire
Jill Stadelman
David Stanoch
John Stapleton
William Stassen
James Steigerwald
Heather Steinmiller
Jill Sterbakov
Betsy Sternthal
Catherine Stewart
Alison Stohr
Chad Stouffer
Lauren Strebel
Keith Stroup
Jeffrey Sturgeon
Leslie Sudock
Christopher Sullivan
Heike Sullivan
Laura Swartz
Elizabeth Tabas Carson
Mark Tanner
Mark Tanner
Kathleen Taylor
Abigail Thibeault
Allan Thoen
Esther Thomas
Eleanor Thompson
James Tiderington
Michelle Tiger
Lawrence Tingley
Robert Tintner
Kathleen Torbit
Susan Toth
Benjamin Traves
Jonathan Underwood
Molly Unterseher
Susan Varghese
Angela Verrecchio
Sherry Vetterlein
Frederick Vogt
Karen Pohlmann
Lisa Port
Carol Press
Lisa Prince
Lisa Prince
Jessica Priselac
Diana Rabeh
Randi Rabinowitz
Catherine Raymond



Debra Weinrich
James Welch
Kali Wellington-James
Rashida West
Brieanna Wheeland
Andrew Whitney
Elizabeth Wideman
Carolyn Williams
David Williams
Charity Wilt
Brighid Wilusz
Esther Winne
Kristen Witherup
Brett Wolfson
Darla Woodring
Daniel Wotherspoon
Donna Wren
Kathryn Young
Jonathan Young
Marianne Yudes
Mehreen Zaman
Jamie Zaum
Thomas Zipfel
Michael Zipfel

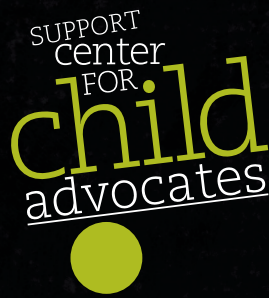
TOY DRIVE VOLUNTEERS

Esuga Abaya
Louise Adams
Joseph Alba
Andrea Albert
Luis Albino
Valerie Alexander
Samer Alnaham
Stephen Anderer
John Angelini
Nicole Angello
David Antczak
Rebecca Antczak
Bonnie Asher
Eileen Bagdon
Jeff Bagley
Deb Baird
Mari Bartram
Dave Beccaria
Lily Becker
Mariellen Bello
Peter Bennett
Sarah Bentzel
Wayne Bernard
Julia Bernd
Leonard Bernstein
Tyler Bielecki
Stephen Bielecki
Courtney Blatt
Susan Blumenfeld
Joe Bongiovanni
Lesley Boyce
Jennifer Bragg
John Branigan
Stephanie Brown
Sharon Browning
Tranecia Brunson
Matthew Bryant
Paula Campbell
Jasmine Campbell
John Campbell
Ingrid Cantarella
Tricia Carlin
Michelle Carson
Virginia Chentis-Stevens
Kara Citarella
Kai Cole
Blaise Cona
Lynn Santilli Connor
Katie Cooke
Daniel Cummings
Aly Cunningham
Annemarie Cutler
Samantha Dahlberg
Heidi Dallas

Jillian Davis
Ken Davis
Lisa Dean
Christa Deeden
Mary DeFalco
Beth Devlin
Jamie DeVose
Rita Di Carlo
Juliette Dobson
Stephanie Domenico
Carol Donner
Geminesse Dorsey
Christine Dougherty
Leni Dow
Shannon Duffy
Abbie DuFrayne
Desinee Dwyer
Susan Edwards
Lori Emrick
Rebecca Engel
Kate Etherington
Tricia Evans
Laura Eyring
John Faford
Lynn Fahringer
Janet Fasy
Elliott Feldman
Zachary Smith Ferris
Keri Lynn Fetterolf
Julia Figurelli-Masucci
Paul Finigan
Alison Finnegan
Joe Flanagan
David Flanagan
Christine Flynn
Thad Fortin
Ingrid Fox
Nicole Friant
Patti Gaab
Pam Gagne
Rod Gagne
Brooke Galante
Shirley Gardner
Amy Garrett
Michelle Gawrys
Ken Gibb
Karen Gilmer-Pauciello
Winifred Gilmore
Carrie Gish
Mark Gittelman
Jim Goebel
Kristina Gold
Patsy Golinski
Samuel Goodge
Melanie Gordon
Josephine Graham
Rebecca Grausam
Elizabeth Gray
Heather Green
James Griffith
Ellensue Gross
Michael Alan Gross
Sal Guerriero
Gill Gutteridge
Jim Hadden
Patricia Halberstadt
Jennifer Hallgren
Tamysha Harrell
Paulette Hassey
Katherine Hastings
Chris Hatch
Collin Hatch
Cathy Heilferty
John Heilferty
Kathleen Hess
Marlys Hickman
Chris Hiester
Edward Hill
Antoinette Hill
Robert Holland
Michael Homans
Alisa Huth

Yolanda Iannetta
Michelle Isman
Ben Jacobs
Katayun Jaffari
Soodabeh Jaffari
Karen James
Emily Johnson
Jennifer Jordan
Anastasia Joseck
Danielle Jouenne
Lev Kalman
Christina Kardon
Grace Kelly
Cathy Kelly-Alba
Katherine Kelton
Annmarie Kerr
Rebecca Kolsky
Matthew Kraus
Lori Kron
Kateryna Kucheruk
Carey Kulp
Krista Kunkle
Deborah Kurtz
Courtney Laub
Rhonda Lee
Scott Lempert
Lisa Lewis
Amy Lieb
Kristy Littman
Maggie Lozada
Jackie Lubrano
Blair Lyon
Nicole Mabengeza
Marlene Mackason
Dana Mariano
Rachael Marsteller
Stacy Martin
Valerie Mattern
Luvenia Maul
Dan Mayo
Maureen McBride
Carol McCabe
Kathleen McCormack
Christina McCormack
Meghan McCormack
Raymond McCullough
Jeffrey McFeeley
Jamie McMahan
Rachel McNally
Jospeh McNamara
Vince McNeil
Janie Mershon
Diana Miller
Dolores Miller
Naomi Mirowitz
Victoria Moore
Zandrea Moyer
Dennis Mshomba
Kristin Mullaney
Courtney Mullen
Sara Mullen
Adrian Mulroney
Peter Murphy
Eileen Murphy
Lloyd Myzetta
Peter Nguyen
Sierra Nicholson
James Nicolo
Karen Noble
Patrice O'Brien
Allison Oler
Mei O'Neill
Tanya Opilan
Barri Orlow
Rebecca Owens
Zaa'Raa Padgett
Danielle Palmer
Deborah Paredes
Stephanie Pascual
Mike Pauciello
Tim Pearsall
Pam Pensabene

Chuck Persing
Maryann Phillip
Jill Porter
LaVerne Preston-Floyd
Radhika Prout
Desiree Purvenas-Hayes
Jen Quinn
Barabara Quinn
Amber Racine
Pat Redmond
Valesca Redon
Kaitlin Reilly
Kathleen Remetta
Ivette Reyes
Debi Ricci
Lori Robbins
Jane Robinson
Jim Robinson
Jennifer Robinson
Carol Rosenthal
Gary Rostick
Kelli Rowland
Misty Rusher-Link
Karen Sanchez
Helen Santoro
Jamie Scanlon
Joseph Scarpello
Joanne Schaaf
Sarah Schlossberg
Neil Schur
Liz Selmer
Lynn Sentilli
Fee Sepahi
Jeanine Serrano
David Silverman
Nicole Simon
Karen Sinclair
Sue Slominski
Wanda Smith
April Smith
Aracely Somoza
Tracy Spurgeon
Art Staerk
Charles Strowhouer
Diane Sullivan
Laura Swartz
Allison Oler Szapary
Jessie Taggart
Kathy Tanner
Kelley Tate
Abigail Thibeault
Taraneh Thompson
Diane Todd
Bill Tokmajian
Nicole Tomlinson
Melanie Toner
Kelly Tornetta
Susan Toth
David Trevaskis
Ashley Tucker
Diane Tuppeny-Hess
Benjamin Tursi
Rae-Lynne Tuzzo
Catherine Van Arsdale
Anna Vaughan
Cheryl Velasco
Kent Wagner
Tara Wallace
Hongbin Wang
Lisa Washington
Ilene Wasserman
Liz Weill
Adam Weinstein
Jennifer West
Rashida West
Lydia Wiley
Stephanie Wilson
Michelle Young
Verdon Young
Ben Zuckerman



Legal and Social Services for Children

CHANGE THE STORY

1900 Cherry Street, Philadelphia, PA 19103
advokid.org

This Bi-Annual Report was supported and created by LevLane